

# Crucible

Homes



Lumley Drive  
Rotherham, S66 7SQ

£995PCM

## Overview

Detached Bungalow

2 Bedrooms

Private Driveway

Large Garden

Close To Local Amenities

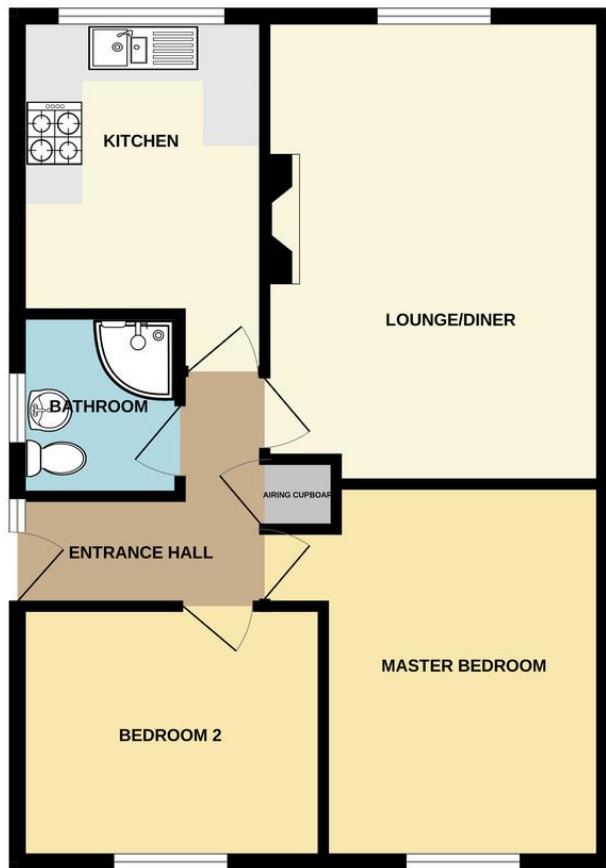


## Description

This beautifully presented 2-bedroom detached bungalow is now available to rent in a peaceful residential area of Maltby, Rotherham. With modern interiors, spacious living areas, and a generous garden, this charming home offers comfort, convenience, and privacy – perfect for professionals, couples, or retirees seeking single-storey living.



# GROUND FLOOR



Score	Energy rating	Current	Potential
92+	A		
81-91	B		
69-80	C	69 C	78 C
55-68	D		
39-54	E		
21-38	F		
1-20	G		

Whilst every attempt has been made to ensure the accuracy of the floorplan contained here, measurements of doors, windows, rooms and any other items are approximate and no responsibility is taken for any error, omission or mis-statement. This plan is for illustrative purposes only and should be used as such by any prospective purchaser. The services, systems and appliances shown have not been tested and no guarantee as to their operability or efficiency can be given.  
Made with Metropix ©2025

**PRS**  
Property Redress Scheme

