

Crucible

Homes



Park Grove
Rotherham, S66 2RZ

Asking Price Of
£140,000

Overview

NO ONWARD CHAIN

THREE BEDROOMS

END TERRACE

POPULAR AREA

OPEN PLAN LOUNGE/KITCHEN

TWO RECEPTION ROOMS



Description

FOR SALE – Park Grove, Bramley, S66 Offers in the region of £140,000

🏠 3 Bedroom End Terrace House

This spacious end-terrace home is situated in a popular residential area of Bramley (S66), close to local amenities, transport links, and schools - perfect for first-time buyers or investors.

The ground floor offers a open-plan kitchen and lounge, which could easily be used as a dining space, plus a separate lounge with a charming bay window.

Upstairs features three good-sized bedrooms and a family bathroom.

The property is in overall good condition, but would benefit from modernisation to the bathroom, allowing the new owner to add their own personal touch and style.

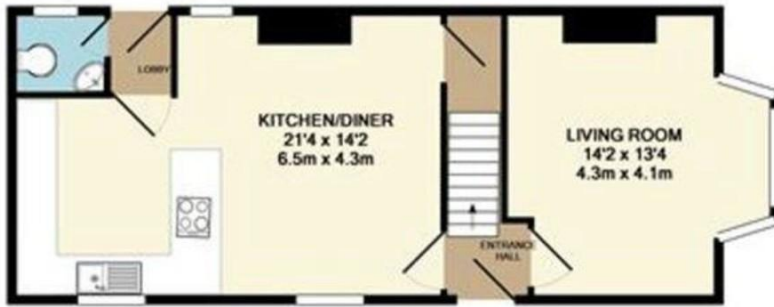
🔑 Key Features:

End terrace position

Three spacious bedrooms

Open-plan living/dining space





Whilst every attempt has been made to ensure the accuracy of the floor plan contained here, measurements of doors, windows, rooms and any other items are approximate and no responsibility is taken for any error, omission, or mis-statement. This plan is for illustrative purposes only and should be used as such by any prospective purchaser. The services, systems and appliances shown have not been tested and no guarantee as to their operability or efficiency can be given.
Made with Metropix 02017

Bay-fronted lounge

Family bathroom

Popular Bramley location

Ideal for first-time buyers or investors

Offers in the region of £140,000

PRS
Property Redress Scheme

