

Crucible

Homes



Goodwin Avenue
Rotherham, S62 7AY

Shared Ownership
£51,000

Overview

Shared Ownership 60% Share

Sold with NO ONWARD CHAIN!!

Ground Floor Apartment

Two Bedrooms

Open plan modern kitchen and
Lounge

Excellent transport links



Description

Goodwin Avenue, Rawmarsh
60% Shared Ownership – £51,000
(Full Market Value £85,000)

A superb opportunity to purchase a 60% share of this well-presented two bedroom ground floor apartment, ideally located in a popular residential area of Rawmarsh.

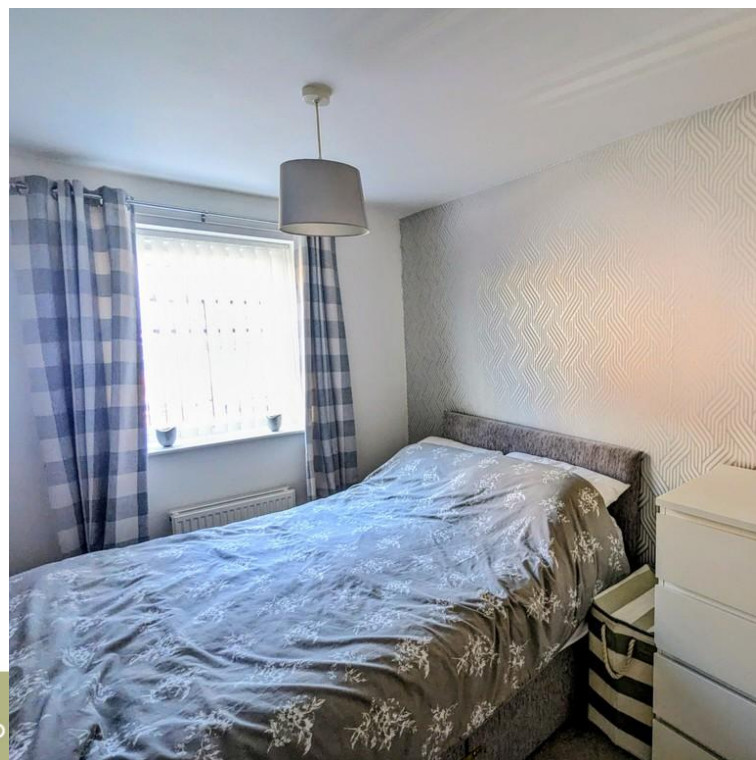
The accommodation briefly comprises: communal entrance leading to a private entrance, porch and hallway, a spacious open plan kitchen fitted with a range of modern units and appliances, and a light and airy lounge with French doors opening onto a small enclosed rear garden.

There are two generously proportioned double bedrooms, each benefitting from double glazing, together with a contemporary bathroom fitted with a walk-in shower, WC and sink set within stylish cabinetry.

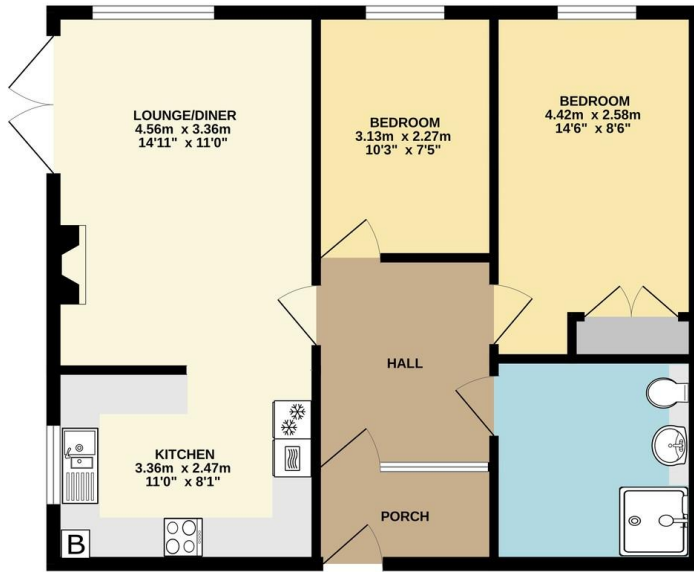
Externally, the property enjoys an allocated parking space, while the enclosed garden provides a private outdoor seating area.

Additional Information:

EPC: C



GROUND FLOOR
57.4 sq.m. (617 sq.ft.) approx.



TOTAL FLOOR AREA: 57.4 sq.m. (617 sq.ft.) approx.
Measurements are approximate. Not to scale. Illustrative purposes only.
Made with Mirograph 02025



Council Tax Band: A

Ground Rent £142.23

Service Charge £158.38

Total payment to Landlord £300.61 a month

This attractive apartment is offered for sale on a shared ownership basis, providing an ideal opportunity for first-time buyers or those seeking a low-maintenance home in a convenient location.

PRS
Property Redress Scheme

