

# Crucible

Homes



Cross Street  
Rotherham, S61 4PS

£750PCM



## Overview

Available now!

Two bedrooms

Rear Garden

Spacious kitchen/Diner

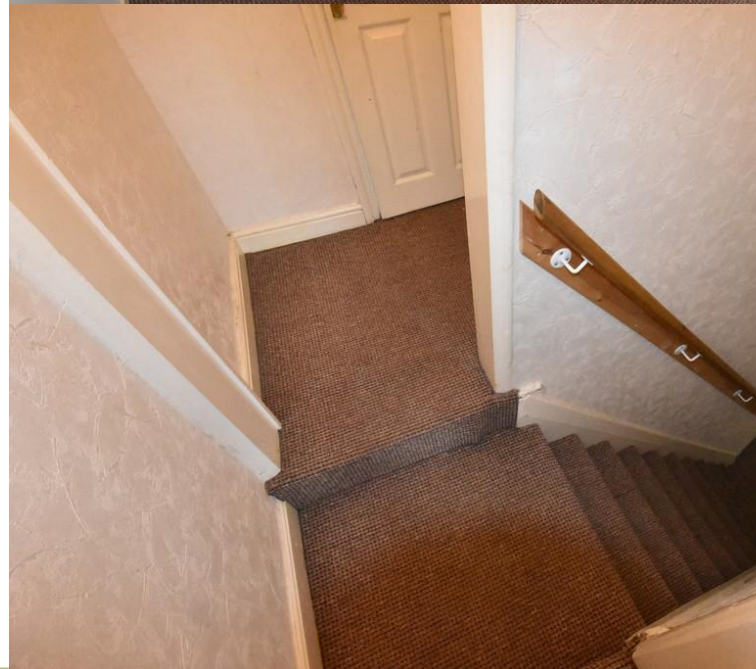
Quiet Residential Area

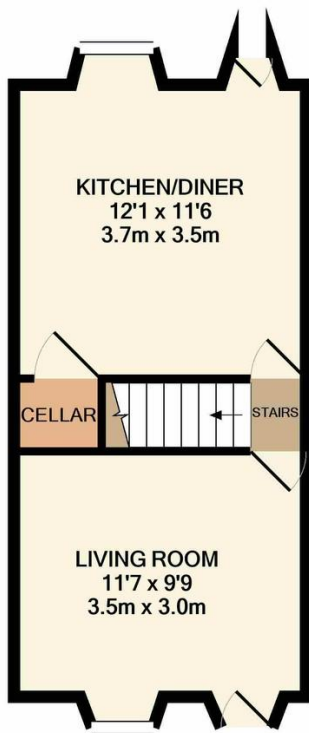
Close to Local Amenities



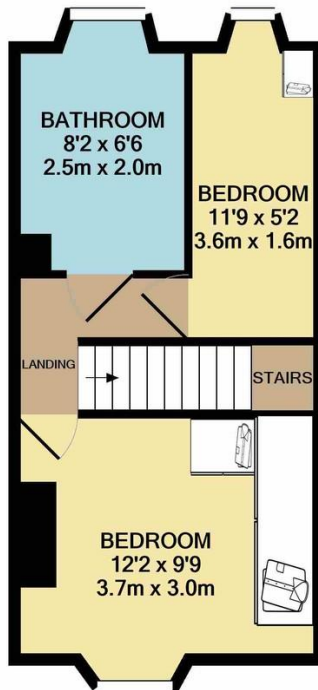
## Description

OVERVIEW Available now is this two bedroom end terrace property located in Greasbrough, Rotherham, close to all local amenities. The property briefly comprises Lounge, modern Kitchen/Diner, two bedrooms, both with fitted wardrobes and a spacious family bathroom. The property further benefits from a rear, fenced, low maintenance garden, UPVC double glazing and gas central heating, early viewing is highly recommended.





GROUND FLOOR  
APPROX. FLOOR  
AREA 295 SQ.FT.  
(27.4 SQ.M.)



1ST FLOOR  
APPROX. FLOOR  
AREA 296 SQ.FT.  
(27.5 SQ.M.)

TOTAL APPROX. FLOOR AREA 591 SQ.FT. (54.9 SQ.M.)

Whilst every attempt has been made to ensure the accuracy of the floor plan contained here, measurements of doors, windows, rooms and any other items are approximate and no responsibility is taken for any error, omission, or mis-statement. This plan is for illustrative purposes only and should be used as such by any prospective purchaser. The services, systems and appliances shown have not been tested and no guarantee as to their operability or efficiency can be given

Made with Metropix ©2021

Score	Energy rating	Current	Potential
92+	A		
81-91	B		
69-80	C		
55-68	D	64   D	64   D
39-54	E		
21-38	F		
1-20	G		

**PRS**  
Property Redress Scheme

