

Crucible

Homes



Park Grove
Rotherham, S66 2RY

Guide Price
£140,000

Overview

NO ONWARD CHAIN

Three bedrooms

Two reception rooms

Spacious accommodation

Enclosed Rear Garden

Potential to Improve



Description

Welcome to this spacious and well-proportioned 3-bedroom end of terrace property, ideally situated on the ever-popular Park Grove in the heart of Bramley, Rotherham.

This charming home offers an excellent opportunity for buyers looking to add their own personal touch, with plenty of scope to modernise and improve. Whether you're a first-time buyer, growing family, or investor, this property ticks all the boxes for potential and location.

Property Features:

🚪 Three Generous Bedrooms

Located on the first floor, all three bedrooms are well-sized, offering flexibility for families, home working, or guest accommodation.

🏠 Two Spacious Reception Rooms

Separate lounge and dining room provide plenty of living space – perfect for entertaining or relaxing with the family.

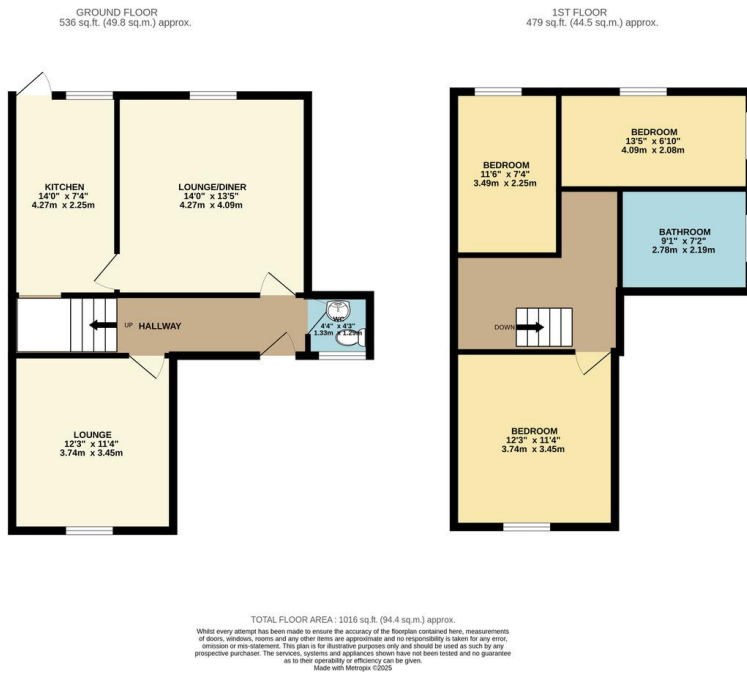
🍳 Fitted Kitchen

A functional kitchen with scope for modernisation to suit your taste.

🚿 Family Bathroom (Upstairs)

A full bathroom suite serving all three bedrooms





on the first floor.



Enclosed Rear Garden

A private, enclosed garden to the rear – ideal for children, pets, or simply enjoying the outdoors.



On-Street Parking Available

Convenient street parking directly outside the property.

Further Details:

Tenure: Freehold

EPC Rating: To be confirmed

Council Tax Band: A

Location Highlights:

Park Grove is a peaceful residential street in Bramley, with excellent access to local shops, schools, and transport links, including easy routes to Rotherham, Sheffield, and the M18/M1 motorways.

Don't Miss Out!

This is a fantastic opportunity to secure a solid home in a sought-after location, with room to make it your own. Viewing is highly recommended to appreciate the space and potential on offer.



Contact us today to arrange a viewing on 01709 500333

PRS
Property Redress Scheme

