

# Crucible

Homes



Georgian Mews  
Rotherham, S60 5US

TO LET  
£825PCM

## Overview

AVAILABLE TO RENT NOW

TWO DOUBLE BEDROOMS

MODERN BATHROOM

GREAT LOCATION

CLOSE TO SHEFFIELD PARKWAY  
AND THE M1

GROUND FLOOR FLAT

ALLOCATED PARKING



## Description

**SUMMARY DESCRIPTION** Welcome to Georgian Mews, a first-floor apartment boasting two double bedrooms, situated in a highly convenient location with excellent access to commuter links and a range of local amenities. Nestled within the charming village of Catcliffe, this property offers a wonderful opportunity for those seeking a comfortable and well-connected home.

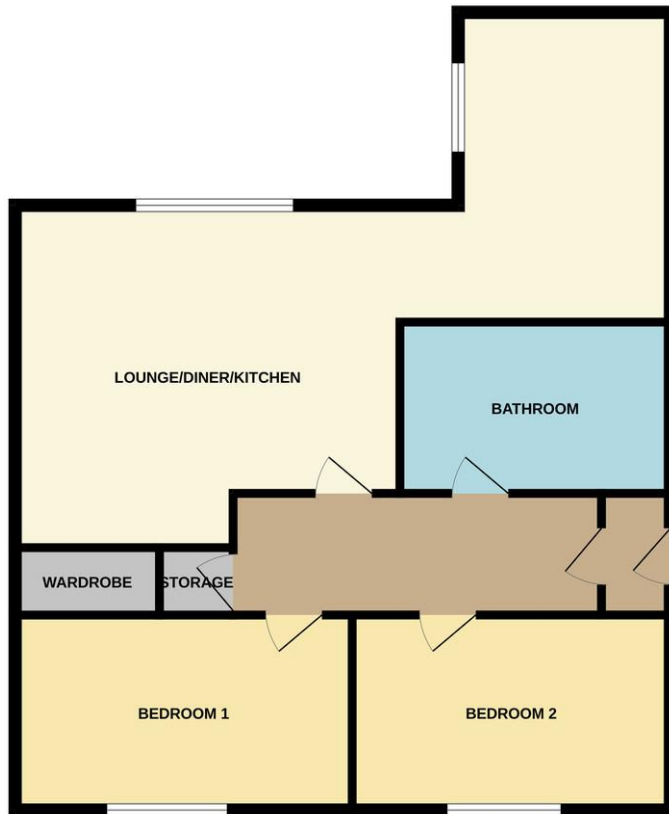
As you step into the private entrance hall, you will immediately appreciate the warm and inviting atmosphere that greets you. The hallway serves as the central hub, providing access to the various rooms within the apartment.

The bathroom is conveniently located off the hallway and features a modern white three-piece suite. It offers a relaxing space to unwind after a long day, complete with a bathtub, shower, washbasin, and WC.

The property further boasts two generously proportioned double bedrooms, both offering ample space for furnishings and storage. These bedrooms create comfortable retreats, allowing you to rest and rejuvenate in peaceful surroundings.

Continuing through the apartment, you will discover a lounge/kitchen. This room provides an





Whilst every attempt has been made to ensure the accuracy of the floorplan contained here, measurements of doors, windows, rooms and any other items are approximate and no responsibility is taken for any error, omission or mis-statement. This plan is for illustrative purposes only and should be used as such by any prospective purchaser. The services, systems and appliances shown have not been tested and no guarantee as to their operability or efficiency can be given.  
Made with Metropix ©2025

ideal setting for relaxation and entertainment. Large windows invite an abundance of natural light, enhancing the pleasant ambiance of the space.

For those who appreciate the outdoors, this apartment complex offers the advantage of communal garden areas.

Additionally, the property includes an allocated parking space, providing convenience and peace of mind for vehicle owners.

