

# Crucible

Homes



Rowms Lane  
Mexborough, S64 8AA

£575PCM



## Overview

AVAILABLE NOW!

Two Bedrooms

Modern Bathroom

Spacious Living Room

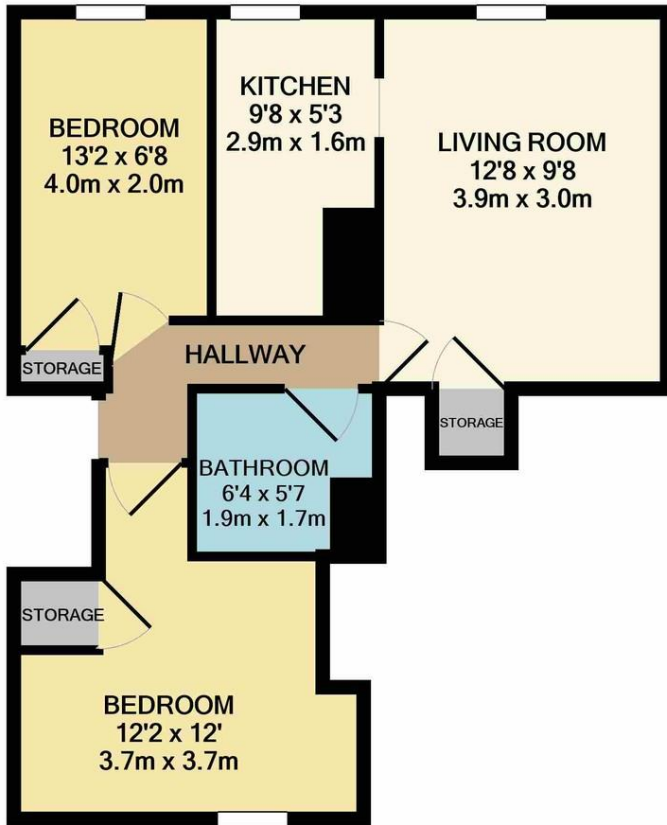
Fitted Kitchen

Close to Local Amenities



## Description





Score	Energy rating	Current	Potential
92+	A		
81-91	B		
69-80	C	69   c	77   c
55-68	D		
39-54	E		
21-38	F		
1-20	G		

TOTAL APPROX. FLOOR AREA 424 SQ.FT. (39.4 SQ.M.)

Whilst every attempt has been made to ensure the accuracy of the floor plan contained here, measurements of doors, windows, rooms and any other items are approximate and no responsibility is taken for any error, omission, or mis-statement. This plan is for illustrative purposes only and should be used as such by any prospective purchaser. The services, systems and appliances shown have not been tested and no guarantee as to their operability or efficiency can be given  
Made with Metropix ©2021

