

Crucible Homes



Hunters Drive
Sheffield, S25 2TG

Asking Price Of
£180,000

Overview

NO CHAIN

Three bedrooms

Beautiful garden

Garage and off road parking

Modern kitchen and bathroom

Ideal location



Description

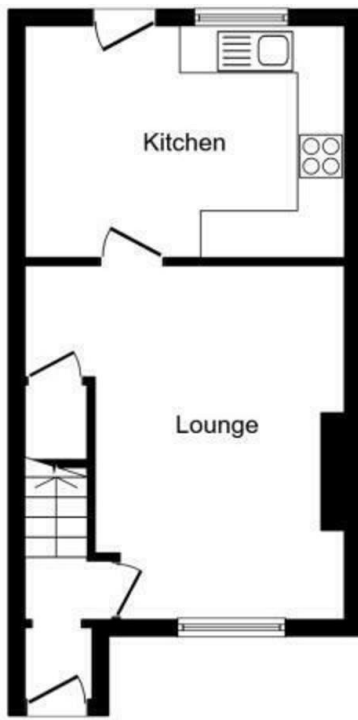
SUMMARY DESCRIPTION Welcome to Hunters Drive, a beautifully presented three bedroom home in Dinnington, Sheffield.

The accommodation briefly comprises; entrance hallway, living room, modern kitchen dining room with integrated oven, hob and extractor fan over and space for additional appliances, first floor landing, three spacious bedrooms and modern recently fitted bathroom with Mira digitally pumped shower. Outside, there is a beautiful rear garden with assorted bushes and shrubbery and a patio seating area, along with a tandem driveway and garage.

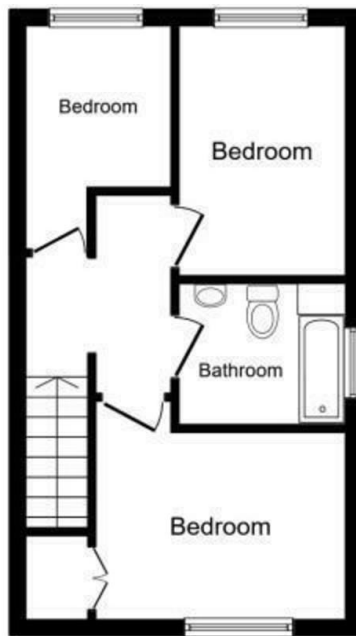
Ideally located in Dinnington close to supermarkets and transport links and easily accessible to the M1 motorway, this home would be perfect for first time buyers or someone looking to expand their family.

Contact the office today for a viewing.





Ground Floor



First Floor

Score	Energy rating	Current	Potential
92+	A		
81-91	B		85 B
69-80	C	70 C	
55-68	D		
39-54	E		
21-38	F		
1-20	G		

Total floor area 63.0 sq. m. (678 sq. ft.) approx

This plan is for illustration purposes only and may not be representative of the property.
Plan not to scale.

Powered by audioagent.com

