

Crucible Homes



Wickersley Road
Rotherham, S60 3PJ

Guide Price
£325,000-£350,000

Overview

CHAIN FREE

Stylish finish throughout

Highly sought after location

Attractive kitchen with Bi-Fold doors

Four bedrooms

Two Reception rooms



Description

Welcome to this beautifully presented 4-bedroom semi-detached home, finished to an exceptional standard throughout. This stunning property combines modern elegance with high-quality finishes, offering a perfect blend of style and comfort.

As you step inside, you are greeted by a spacious entrance hall leading to a bright and airy open-plan living area. The heart of the home is the contemporary kitchen, fully fitted with top-of-the-line appliances, sleek cabinetry, and luxury countertops, making it ideal for both casual dining and entertaining. The adjoining dining area flows seamlessly into the living space, which boasts large bi fold doors allowing for an abundance of natural light.

Upstairs, the property features four generously sized bedrooms, each tastefully decorated and finished to a high specification.

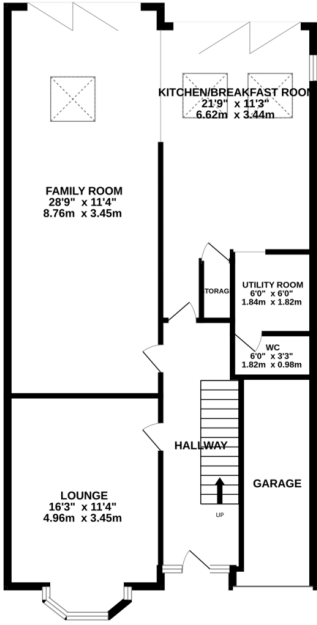
Outside, the property offers a beautifully landscaped garden, perfect for outdoor relaxation or hosting summer gatherings. There is also off-street parking and a private garage for added convenience.

Located in a desirable neighbourhood, this home is close to excellent local amenities, schools, and transport links, making it an ideal choice for families and professionals alike.

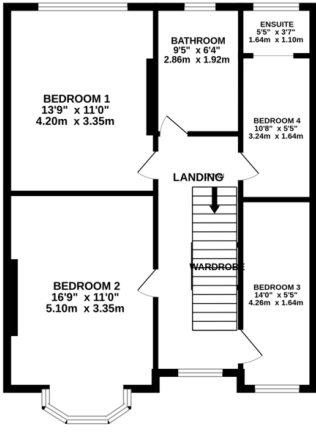
Don't miss the opportunity to make this luxurious, move-in ready home your own!



GROUND FLOOR
956 sq.ft. (88.8 sq.m.) approx.



1ST FLOOR
639 sq.ft. (59.4 sq.m.) approx.



TOTAL FLOOR AREA : 1595 sq.ft. (148.2 sq.m.) approx.
 Whilst every attempt has been made to ensure the accuracy of the floorplan contained here, measurements of doors, windows, rooms and any other items are approximate and no responsibility is taken for any errors, omissions or mis-statements. The plan is for general guidance only and should be used in such by any prospective purchaser. The services, systems and appliances shown have not been tested and no guarantee as to their operability or efficiency can be given.
 Made with Metropix ©2024



