

Crucible

Homes



Grange Road
Moorgate , S60 3LA

£270,000

Overview

Three Bedrooms

Kitchen/Diner

Utility

Cloakroom

Single Detached Garage

EPC - D



Description

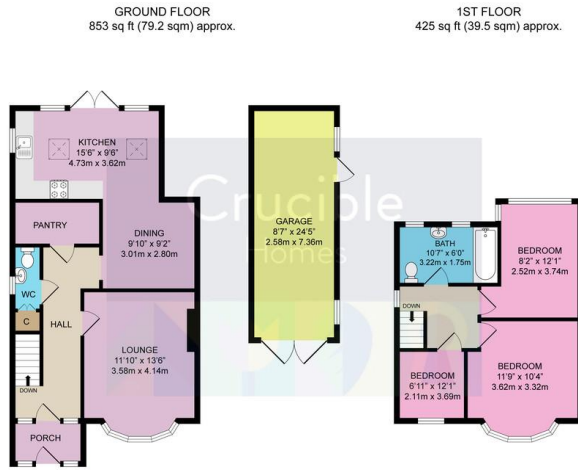
SUMMARY

Crucible Homes are excited to be selling this extended THREE bedroom semi-detached FAMILY home located on the popular estate of MOORGATE.

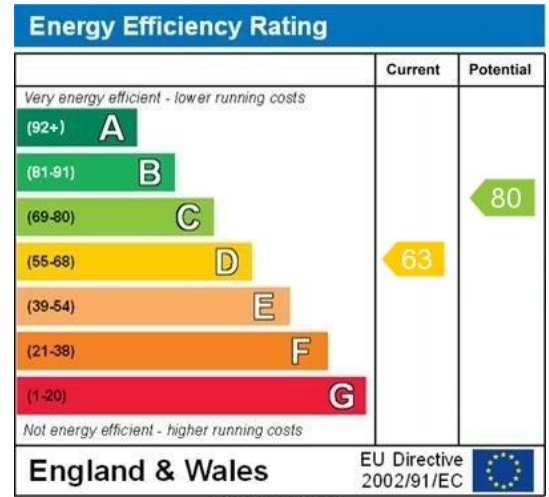
This property offers space for a growing family, potential to extend further with planning consent and placed ideally close to amenities and motorway links. Located on a family estate within good distance to the Wickersley School and Sports College and local Primary School.

The layout out of the property comprise of; spacious hallway with stairs leading to the first floor, utility room and downstairs WC, door leading to the well portioned lounge with front facing bay window. Separate entrance door taking to you the dining kitchen area, which has a wonderful feature of floor to ceiling UPVC windows along with two Velux windows and French doors leading to the mainly laid to lawn enclosed garden.





TOTAL FLOOR AREA: 1278 sq ft (118.7 sqm) approx.



The kitchen has ample wall and base units with a central island, built in oven, hob and extractor above and a separate area to be used as a potential family area or dining room.

To the first floor there are three good sized bedrooms, bedroom three being nicely extended and spacious family bathroom comprising of a white three piece suite and two rear facing UPVC windows allowing a lot of natural light.

A property that must be viewed to appreciate what is on offer - call Crucible Homes to arrange a viewing.

AGENCY NOTE

EPC Rating - D

Council Tax Band - C

Tenure - Believe to be Freehold

