



**£249,950**

## the old school rooms 8 Main Street,

An individually built character property with accommodation comprising of a lounge, Raised stage diner, breakfast, kitchen, utility room, downstairs W/C, three bedrooms and a bathroom. Off road parking with garage and gardens to front and rear.

- Close to Local Amenities
- Full of Character
- Off Road Parking
- Outside Utility Room



For further information contact Vincent Estates Agents:

Tel: 0116 2246465 | Email: [info@vincent-s.co.uk](mailto:info@vincent-s.co.uk)



### Garden

There is off road parking leading to a garage, power and lighting. The front garden is mainly paved, a variety of plants and security lighting. The rear garden is mainly lawn with a variety of plants and borders and an ornamental well.



### Garden

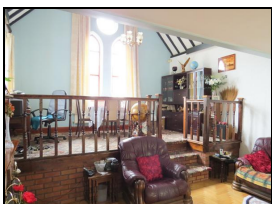


### Garden



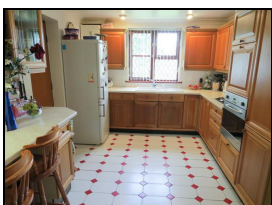
### Dining Room

Glazed character windows to front and side elevations, traditional Fireplace, radiator, television point, telephone point also feature wooden beams and stage diner area french doors to patio area



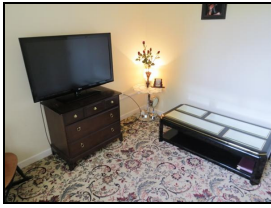
### Dining Room

Glazed character windows to front and side elevations, traditional Fireplace, radiator, television point, telephone point also feature wooden beams and stage diner area french doors to patio area



### Kitchen

Comprising of a range of wall and base units to include display cabinets. In addition, there are contrasting roll edge work surfaces with complementing ceramic tiled surrounds sinks with drainer, gas hob, built in oven There is also appliance space for tall-standing fridge/freezer, heating radiator, glazed windows to rear elevation. glazed doors looking out to the side rear garden



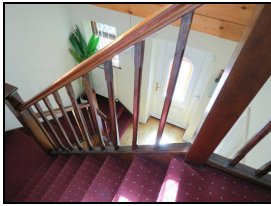
### **sitting room**

Internal door serves access into delightful homely Sitting Room featuring television connection point, telephone point, glazed window to the rear elevation looking out to the rear garden.

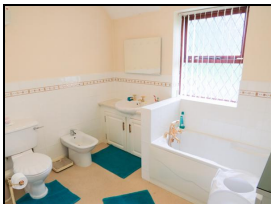


### **Bedroom**

window to front and radiator.



### **Entrance Hall**



### **Bathroom**

Five piece suite comprising of low flush wc, wash hand basin, bath and separate large walk in shower cubicle, bidet, part tiled walls, ceiling lights, single radiator, opaque glazed window to the rear aspect



### **Bedroom**

**Property Ref: MAIN08**

Energy Performance Certificates

