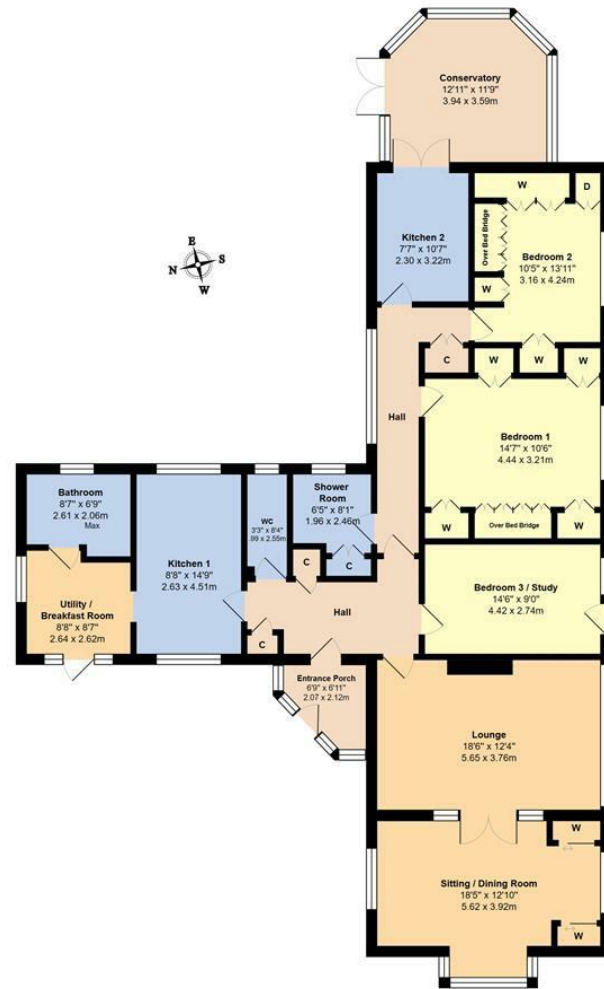


The Avenals, Angmering BN16 4AN

£750,000 - Freehold



- **Substantial Detached Bungalow**
- **Three Bedrooms (one currently arranged as a study)**
- **Contemporary Bathroom & Shower Room + Additional WC**
- **Garage & Double Width Driveway**
- **Considerable Corner Plot in Private Cul-De-Sac Close to Village Centre**
- **Versatile Accommodation**
- **Two Kitchens | Two Reception Rooms**
- **Conservatory**
- **Potential Annex Accommodation**
- **EER: C**

"Cave Canem" is a substantial detached bungalow occupying a large, elevated corner plot, within a delightful private cul-de-sac.

This unique property is now offered for sale boasting decidedly spacious and extremely versatile accommodation, which is currently configured as; two bedrooms, both of which enjoy extensive built-in storage; three reception rooms; two fitted kitchens; utility/breakfast room; conservatory; contemporary bath and shower rooms, and a further independent WC. Notably, the inclusion of a second kitchen gives rise to potential annex style accommodation.

The beautifully maintained gardens that fully surround the property are a most impressive feature. The vast array of plants, bushes, and trees provide a scenic background, and there are several patio/decked areas, including an enclosed westerly facing courtyard, where you can relax and enjoy the garden views.

Additional attributes include an entrance porch, leading through to a generous entrance hall; gas central heating; double glazing; a detached garage with electric roller door, and a double width block paved driveway enabling off road parking.

The Avenals is delightfully positioned within the conservation area of Angmering, only a few hundred yards from the village square.

The situation also enables easy access to many other important local amenities including; Angmering Medical Centre; the Village Hall; two primary schools; and The Angmering Secondary School; all of which can be found in an approximate 1 mile radius.

Notably, public transport links are conveniently close by, with the number '9' bus service operating along neighbouring High Street, and Angmering mainline railway station, which provides a regular service to London Victoria via Gatwick, found in approximately 1.5 miles.

TENURE - Freehold

Council Tax Band: F

Energy Performance Rating: C

AGENTS NOTE - For clarification, we wish to inform prospective purchasers that we have prepared these sales particulars as a general guide. We have not carried out a detailed survey nor tested the services, appliances and specific fittings. Room sizes should not be relied upon for carpets and furnishings.

WITH OVER...



At an Average rating of

4.9/5 ★★★★★



Glyn-Jones & Company
Rustington Office Sales
01903 770095
rustington@glyn-jones.com

WITH OVER...



COMPANY REVIEWS

At an Average rating of

4.9/5 ★★★★★



Glyn-Jones & Company
Rustington
01903 770095

