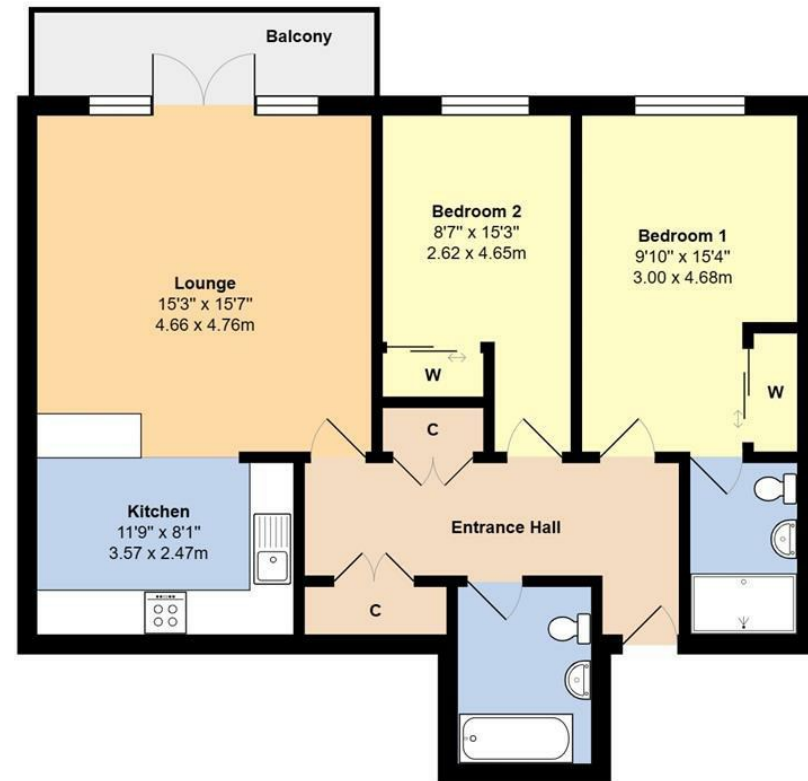


29 Heritage Place Broadmark Lane,

£350,000 - Leasehold

Glyn-Jones



Second Floor

Total Area: 860 ft² ... 79.9 m² (Excluding Balcony)

Whilst every attempt has been made to ensure the accuracy of the floor plan contained here, measurements are approximate and no responsibility is taken for error, omission or mis-statement. This plan is for illustrative purposes only and should be used as such by any prospective purchaser. Created by Jim 2023



TENURE - Leasehold

Council Tax Band: D

Energy Performance Rating: C

AGENTS NOTE - For clarification, we wish to inform prospective purchasers that we have prepared these sales particulars as a general guide. We have not carried out a detailed survey nor tested the services, appliances and specific fittings. Room sizes should not be relied upon for carpets and furnishings.

WITH OVER...



At an Average rating of **4.9/5** ★★★★★



Glyn-Jones & Company
Rustington Office Sales
01903 770095
rustington@glyn-jones.com

- Superb First Floor Apartment With West Facing Balcony
- Two Double Bedrooms (En-suite Shower Room)
- Stylish Kitchen
- Double Glazing | Gas Underfloor Heating
- No Forward Chain
- Sought After Development Just Off Rustington Seafront
- Lounge/Dining Room
- Contemporary Style Bathroom
- Secure Gated Parking
- EER - C80

Superb First Floor Apartment With West Facing Balcony | Sought After Development Just Off Rustington Seafront | Two Double Bedrooms (En-suite Shower Room) | Lounge/Dining Room | Stylish Kitchen | Contemporary Style Bathroom | Double Glazing | Gas Underfloor Heating | Secure Gated Parking | Viewing Recommended | No Forward Chain | EER:

AGENT'S NOTE: Please be aware that there is no lift service within this particular block.



At an Average rating of **4.9/5** ★★★★★



Glyn-Jones & Company
Rustington
01903 770095

29 Heritage Place Broadmark Lane, Rustington, West Sussex, BN16 2GY

