

FOR SALE



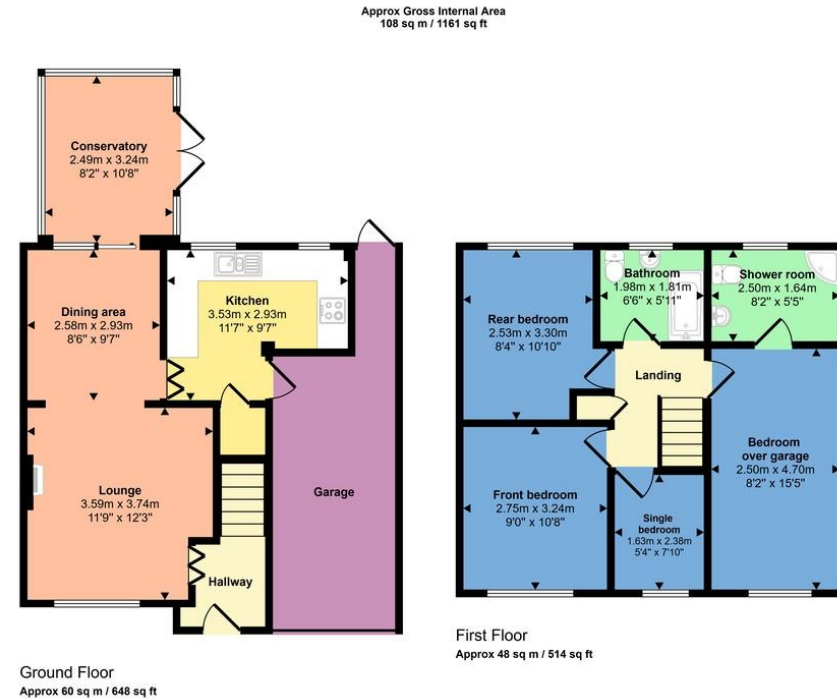
Raleigh Close, Hinckley
£290,000

MARTIN&CO

7 Raleigh Close

- EXTENDED FOUR BEDROOM SEMI DETACHED HOME
- GOOD SIZED LOUNGE/DINING ROOM
- MODERN KITCHEN WITH ACCESS TO GARAGE
- MODERN UPVC CONSERVATORY

AN EXTENDED FOUR BEDROOM SEMI DETACHED HOME IN HINCKLEY. Comprising entrance hallway, lounge/diner, conservatory and kitchen. First floor having four bedrooms, bathroom and ensuite. Front driveway, and single garage and rear garden with patio. Gas central heating and double glazed. VIEWING ADVISED!



This floorplan is only for illustrative purposes and is not to scale. Measurements of rooms, doors, windows, and any items are approximate and no responsibility is taken for any error, omission or mis-statement. Icons of items such as bathroom suites are representations only and may not look like the real items. Made with Made Snappy 360.

Score	Energy rating	Current	Potential
92+	A		
81-91	B		82 B
69-80	C		
55-68	D	62 D	
39-54	E		
21-38	F		
1-20	G		

Martin & Co Hinckley

99-109 Castle Street • • Hinckley • LE10 1DA
T: 01455 636349 • E: hinckley@martinco.com

01455 636349

<http://www.martinco.com>

MARTIN&CO

Accuracy: References to the Tenure of a Property are based on information supplied by the Seller. The Agent has not had sight of the title documents. A Buyer is advised to obtain verification from their Solicitor. Items shown in photographs including but not limited to carpets, fixtures and fittings are not included unless specifically mentioned within the sales particulars. They may however be available by separate negotiation. Buyers must check the availability of any property and make an appointment to view before embarking on any journey to see a property. No person in the employment of the agent has any authority to make any representation about the property, and accordingly any information given is entirely without responsibility on the part of the agents, sellers(s) or lessors(s). Any property particulars are not an offer or contract, nor form part of one. **Sonic / laser Tape:** Measurements taken using a sonic / laser tape measure may be subject to a small margin of error. **All Measurements:** All Measurements are Approximate. **Services Not tested:** The Agent has not tested any apparatus, equipment, fixtures and fittings or services and so cannot verify that they are in working order or fit for the purpose. A Buyer is advised to obtain verification from their Solicitor or Surveyor.