



ORLANDO REID

ORLANDO REID

Poynders Court, Clapham, SW4
Asking Price of £375,000



ORLANDO REID

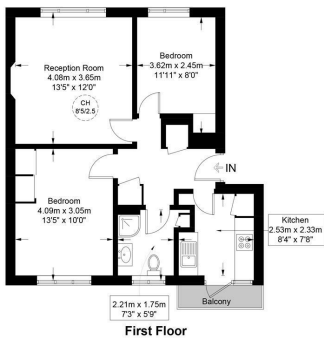
SUMMARY

An attractive two double bedroom first floor flat of nearly 600 sq ft located in a small private block a short walk from Clapham Common and Clapham South. This attractive flat comes with no onward chain and a long lease.

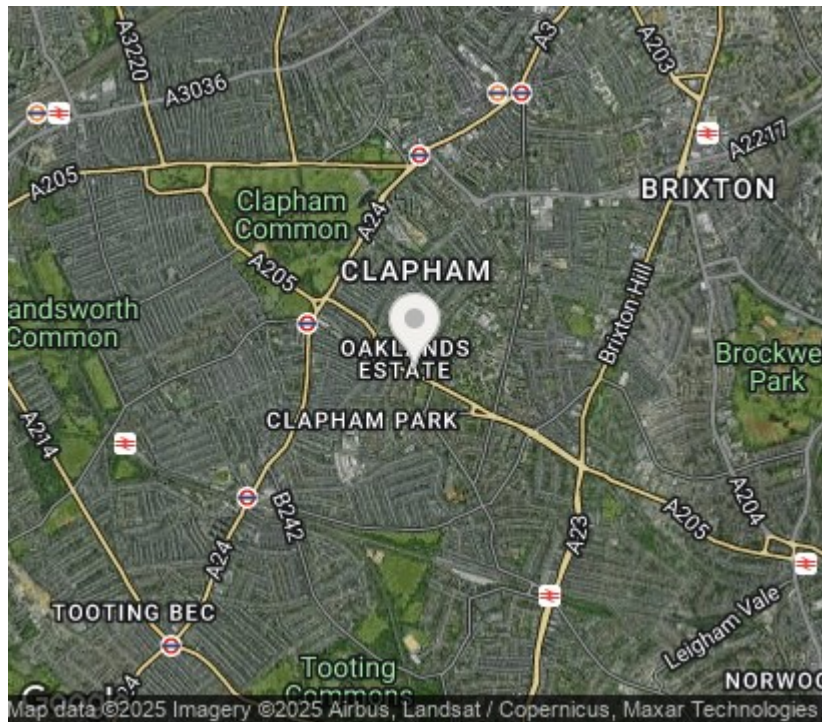


Poynders Court, SW4

Approximate Gross Internal Area = 580 sq ft / 53.9 sq m



This plan is for layout guidance only and is not drawn to scale unless stated. All dimensions, including windows, doors, and the Total Gross Internal Area (GIA), are approximate. For precise measurements, please consult a qualified architect or surveyor before making any decisions based on this plan.



Orlando Reid Sales 1-3 Old Town, Clapham, London, SW4 0JT

Tel: 020 7627 3197

Email: sales@orlandoreid.co.uk

Agents Note: Whilst every care has been taken to prepare these sales particulars, they are for guidance purposes only. All measurements are approximate are for general guidance purposes only and whilst every care has been taken to ensure their accuracy, they should not be relied upon and potential buyers are advised to recheck the measurements.