



Dumont, 27 Albert Embankment, SE1

Offers In Excess Of
£800,000


ORLANDO REID

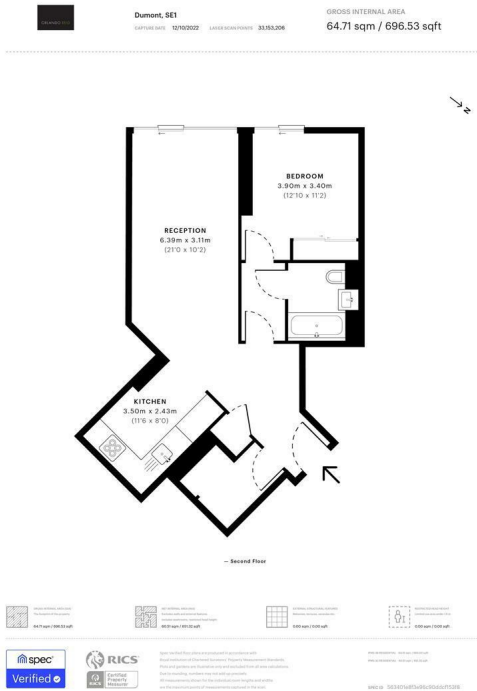


SUMMARY

STUNNING MODERN DEVELOPMENT IN HEART OF CENTRAL LONDON-

Located on the Albert Embankment by the River in a very desirable building is this superb one double bedroom flat of 65 sqm. This stunning flat has access to numerous private facilities and has great views of the river.

-  1
-  1
-  1
-  B



Orlando Reid Sales 1-3 Old Town, Clapham, London, SW4 0JT

Tel: 020 7627 5566

Email: sales@orlandoreid.co.uk