



ORLANDO REID

ORLANDO REID

Clapham Park Road, Clapham, Clapham, SW4

£1,800



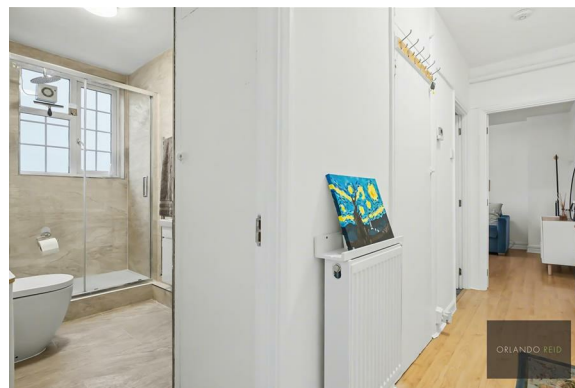
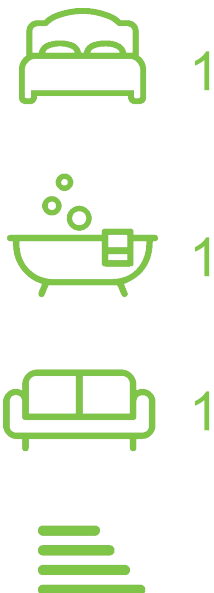
ORLANDO REID

SUMMARY

Orlando Reid are pleased to present to the market this well-presented one bedroom apartment in the heart of Clapham.

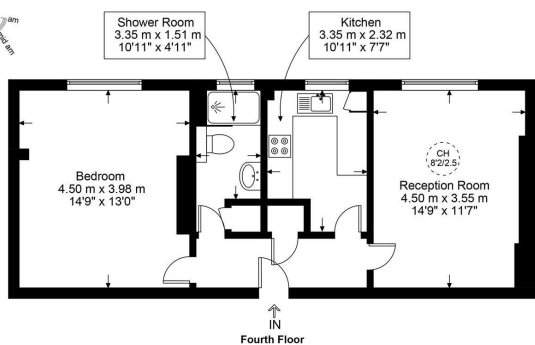
The property comprises a well-proportioned reception, separate kitchen with ample storage, modern bathroom, and sizable bedroom - all with beautiful skyline views towards the rear of the property. The property also benefits from in-built storage, and double glazing.

The property is conveniently-located within easy reach of an almost endless array of local amenities. Access to transport is also fantastic - with Clapham North situated within approximately 5 minutes, and Brixton within about 10 minutes - on top of this, there are countless bus routes scattered within the local vicinity.

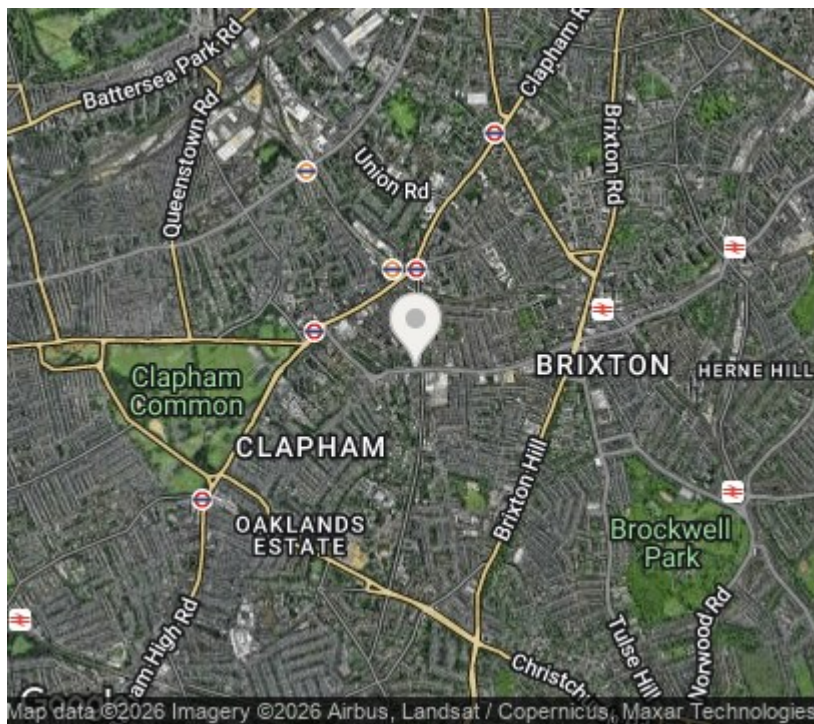


Ascot Court, SW4

Approximate Gross Internal Area = 571 sq ft / 53.1 sq m



This plan is for layout guidance only and is not drawn to scale unless stated. All dimensions, including windows, doors, and the Total Gross Internal Area (GIA), are approximate. For precise measurements, please consult a qualified architect or surveyor before making any decisions based on this plan.



Orlando Reid Sales 1-3 Old Town, Clapham, London, SW4 0JT

Tel: 020 7627 3197

Email: sales@orlandoreid.co.uk

Agents Note: Whilst every care has been taken to prepare these sales particulars, they are for guidance purposes only. All measurements are approximate are for general guidance purposes only and whilst every care has been taken to ensure their accuracy, they should not be relied upon and potential buyers are advised to recheck the measurements.