



**2 Bed
Apartment
located in Clapham**

£2,500 PCM



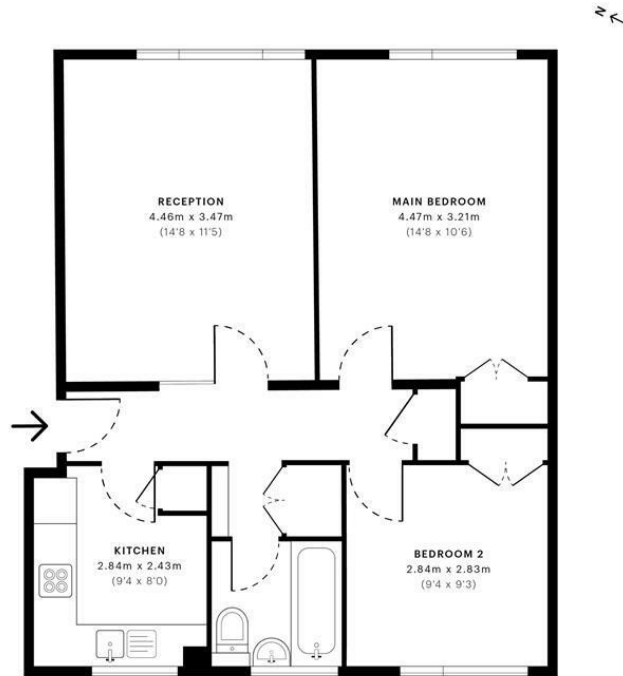


St. Anthons Court, SW12

CAPTURE DATE: 19/07/2022 LASER SCAN POINTS: 61,305,985

GROSS INTERNAL AREA

58.99 sqm / 634.96 sqft



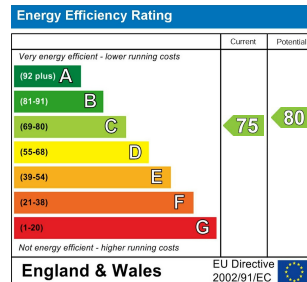
— Ground Floor

	GROSS INTERNAL AREA (GIA) The footprint of the property 58.99 sqm / 634.96 sqft		NET INTERNAL AREA (NIA) Excludes walls and structural features Includes mezzanines, restricted head height 55.28 sqm / 595.03 sqft		EXTERNAL STRUCTURAL FEATURES Balconies, terraces, verandas etc. 0.00 sqm / 0.00 sqft		RESTRICTED HEAD HEIGHT Limited use area under 1.8m 0.00 sqm / 0.00 sqft
--	--	--	--	--	---	--	--



Spec Verified floor plans are produced in accordance with Royal Institution of Chartered Surveyors' Property Measurement Standards. Plots and gardens are illustrative only and excluded from all area calculations. Due to rounding, numbers may not add up precisely. All measurements shown for the individual room lengths and widths are the maximum points of measurements captured in the scan.

IPWS 3B RESIDENTIAL: 61.44 sqm / 661.33 sqft
IPWS 3C RESIDENTIAL: 57.82 sqm / 622.37 sqft
SPEC ID: 62cfd61699ec80Dde583426f



DIRECTIONS

CONTACT

1-3 Old Town
Clapham
London
SW4 0JT

E: lettings@orlandoreid.co.uk
T: 020 7627 3197
www.orlandoreid.co.uk

ORLANDO REID