



**1 Bed  
Apartment  
located in Clapham**

£2,150 PCM

ORLANDO REID



ORLANDO REID

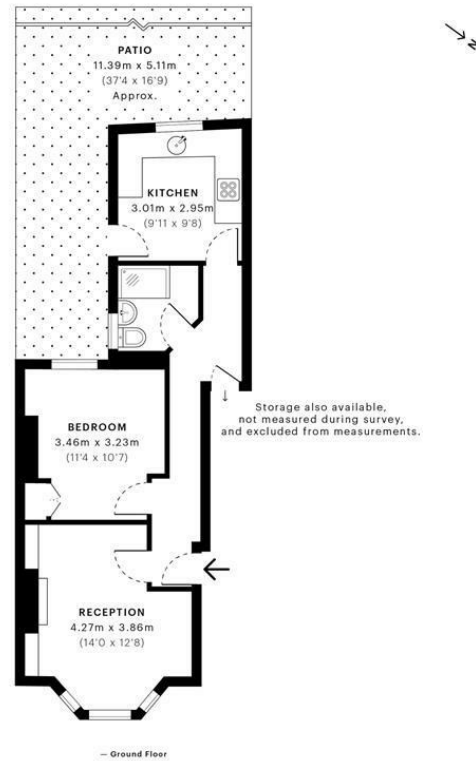


Kimberley Road, SW9

CAPTURE DATE 19/11/2021 LASER SCAN POINTS 3,118,209

GROSS INTERNAL AREA

45.51 sqm / 489.87 sqft



GROSS INTERNAL AREA (GIA)  
The footprint of the property  
45.51 sqm / 489.87 sqft

NET INTERNAL AREA (NIA)  
Excludes walls and external features  
Includes washrooms, restricted head height  
42.15 sqm / 453.70 sqft

EXTERNAL STRUCTURAL FEATURES  
Balconies, terraces, verandas etc.  
0.00 sqm / 0.00 sqft

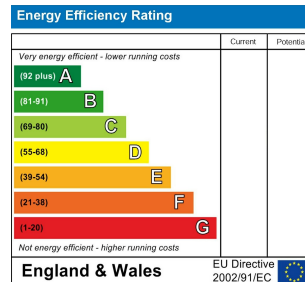
RESTRICTED HEAD HEIGHT  
Limited use area under 1.8m  
0.00 sqm / 0.00 sqft



Spec Verified floor plans are produced in accordance with Royal Institution of Chartered Surveyors' Property Measurement Standards. Plots and gardens are illustrative only and excluded from all area calculations. Due to rounding, numbers may not add up precisely. All measurements shown for the individual room lengths and widths are the maximum points of measurements captured in the scan.

IPWS 3B RESIDENTIAL 44.66 sqm / 480.72 sqft  
IPWS 3C RESIDENTIAL 42.23 sqm / 454.56 sqft

SPREC ID: 610224a943356a0e59310f4c



## DIRECTIONS

## CONTACT

1-3 Old Town  
Clapham  
London  
SW4 0JT

E: [lettings@orlandoreid.co.uk](mailto:lettings@orlandoreid.co.uk)  
T: 020 7627 3197  
[www.orlandoreid.co.uk](http://www.orlandoreid.co.uk)

ORLANDO REID