



**2 Bed  
Apartment  
located in Clapham**

£2,200 PCM

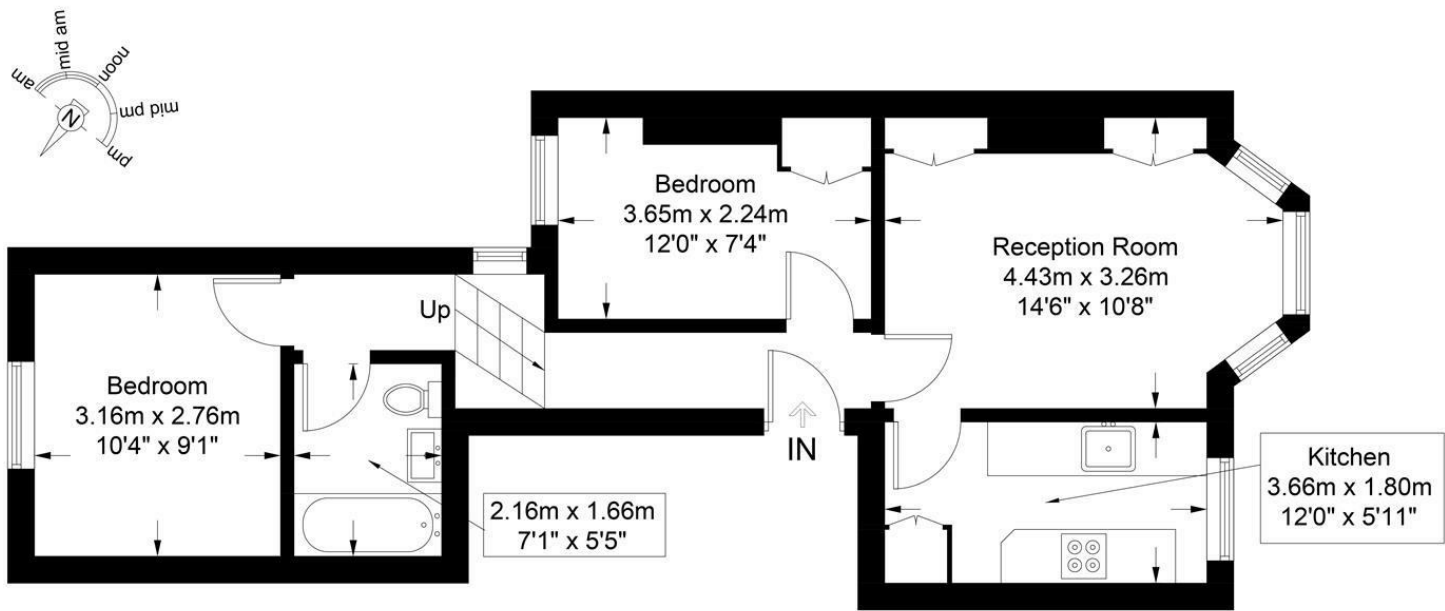
ORLANDO REID



ORLANDO REID

Mayflower Road, SW9

Approximate Gross Internal Area = 522 sq ft / 48.5 sq m



First Floor

DIRECTIONS

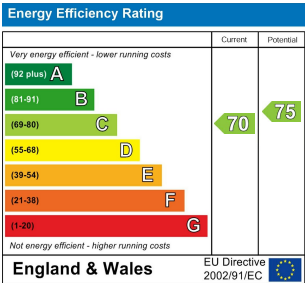
CONTACT

1-3 Old Town  
Clapham  
London  
SW4 0JT

E: [lettings@orlandoreid.co.uk](mailto:lettings@orlandoreid.co.uk)  
T: 020 7627 3197  
[www.orlandoreid.co.uk](http://www.orlandoreid.co.uk)



This plan is for layout guidance only and is not drawn to scale unless stated. All dimensions, including windows, doors, and the Total Gross Internal Area (GIA), are approximate. For precise measurements, please consult a qualified architect or surveyor before making any decisions based on this plan.



ORLANDO REID