



**2 Bed
Apartment
located in**

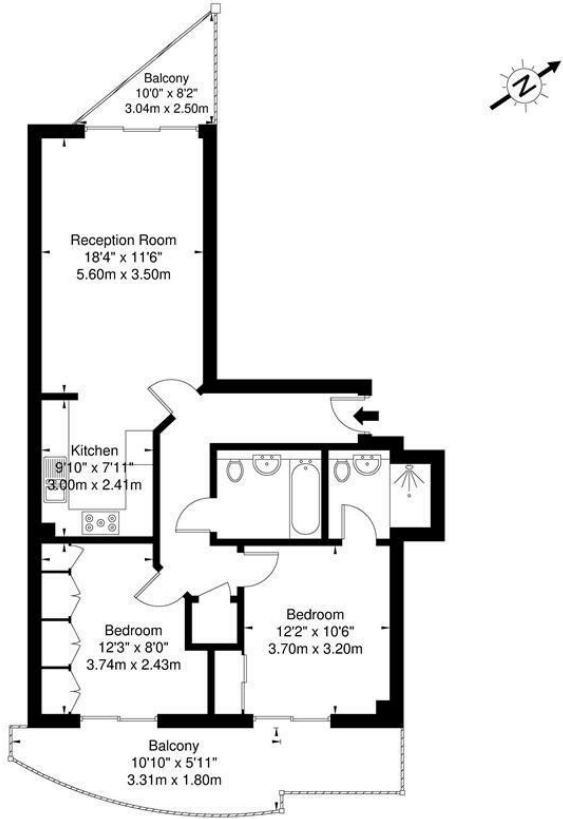
£3,200 Per Month



ORLANDO REID

St George Wharf, SW8 2LW

Approx. Gross Internal Area = 74.2 sq m / 798 sq ft



Ref

Copyright

**BLEU
PLAN**

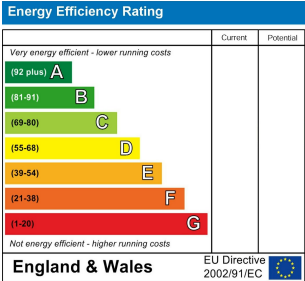
The Floor plan is not to scale and measurements and areas shown are approximate and therefore should be used for illustrative purposes only. The plan has been prepared in accordance with the RICS code of Measuring Practice and whilst we have confidence in the information produced it must not be relied on. If there is any aspect of particular importance, you should carry out or commission your own inspection of the property.
Copyright © BLEUPLAN

DIRECTIONS

CONTACT

1-3 Old Town
Clapham
London
SW4 0JT

E: lettings@orlandoreid.co.uk
T: 020 7627 3197
www.orlandoreid.co.uk



ORLANDO REID