



Francis Bentley Mews

SW4

ORLANDO REID



Embrace the elegance of Clapham Old Town, where heritage charm meets contemporary design in a secluded, gated mews. This exquisite freehold home offers a rare balance of serenity and sophistication - just moments from vibrant high streets, green open spaces, and top-tier schools. Thoughtfully crafted across four expansive levels, it redefines modern family living with timeless style, flexible luxury, and enduring investment appeal.

A HARMONIOUS LIFESTYLE



Nestled in the heart of Clapham Old Town, this address offers the best of both worlds - village charm with a cosmopolitan edge. Stroll to artisan cafés, acclaimed restaurants, and independent boutiques, or unwind in the wide green expanse of Clapham Common. With excellent schools and swift links to Central London, this is one of the capital's most coveted neighbourhoods - where lifestyle and location align effortlessly.

CONNECTIVITY

Explore London with ease - unrivaled connectivity puts you at the heart of the city, with major transport hubs just moments away. Commuting for work or leisure becomes effortless, connecting you quickly to key destinations and enhancing your lifestyle.



Clapham
Common



Victoria
9 mins



Oxford Circus
15 mins



Clapham
Common



Bank
15 mins



Canary Wharf
23 mins



Clapham
Common



Gatwick
43 mins



Heathrow
57 mins



Perfectly placed for families and ambitious minds alike, Francis Bentley Mews is surrounded by a selection of outstanding primary and secondary schools. With excellent transport links to some of London's top universities, it's a location where education and opportunity go hand in hand - supporting every stage of learning.

EXCEPTIONAL EDUCATION

PRIMARY

Eaton House Manor
13 min walk

Parkgate House School
16 min walk

Thomas' Clapham
9 min drive

The White House Preparatory
10 min drive

SECONDARY

Eaton House Manor
13 min walk

Emmanuel School
14 min drive

Royal Ballet School
19 min drive

Dulwich College
21 min drive

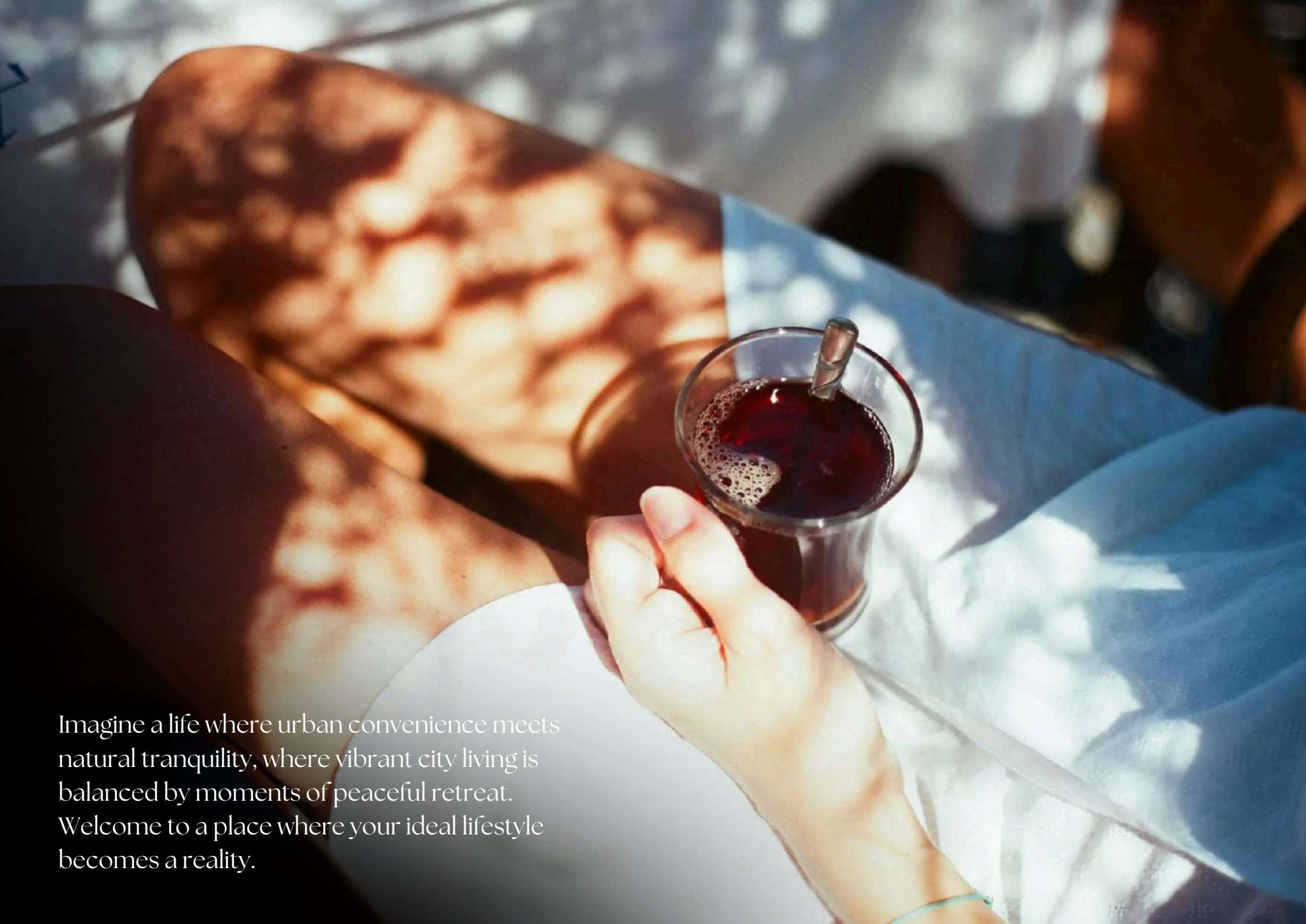
UNIVERSITIES

Kings College London
24 min tube

University College London
32 min tube

London School Of Economics
38 min tube

Imperial College London
39 min tube



Imagine a life where urban convenience meets natural tranquility, where vibrant city living is balanced by moments of peaceful retreat. Welcome to a place where your ideal lifestyle becomes a reality.

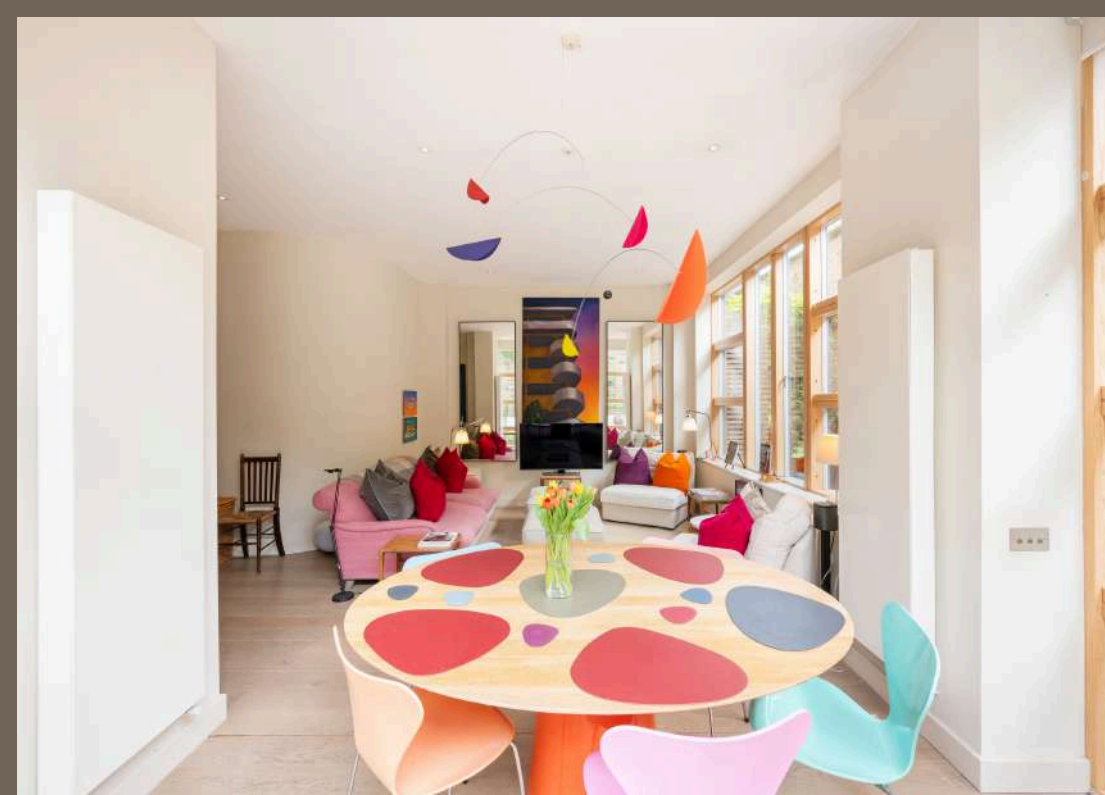
HOST

From the moment you step inside, the home's impressive scale and thoughtful design are instantly apparent. A bright, open-plan layout seamlessly connects the lounge, dining, and kitchen areas, flowing effortlessly into a private, wraparound garden. This central hub is ideal for entertaining, working from home, or simply enjoying everyday moments with family. The kitchen is impeccably styled, featuring sleek finishes, new Siemens appliances and ample storage, all opening onto versatile living spaces bathed in natural light.



London Borough of Lambeth
**FRANCIS BENTLEY
MEWS**
SW4







GROW



The vast basement level presents various options: a cinema room, gym, office or playroom.

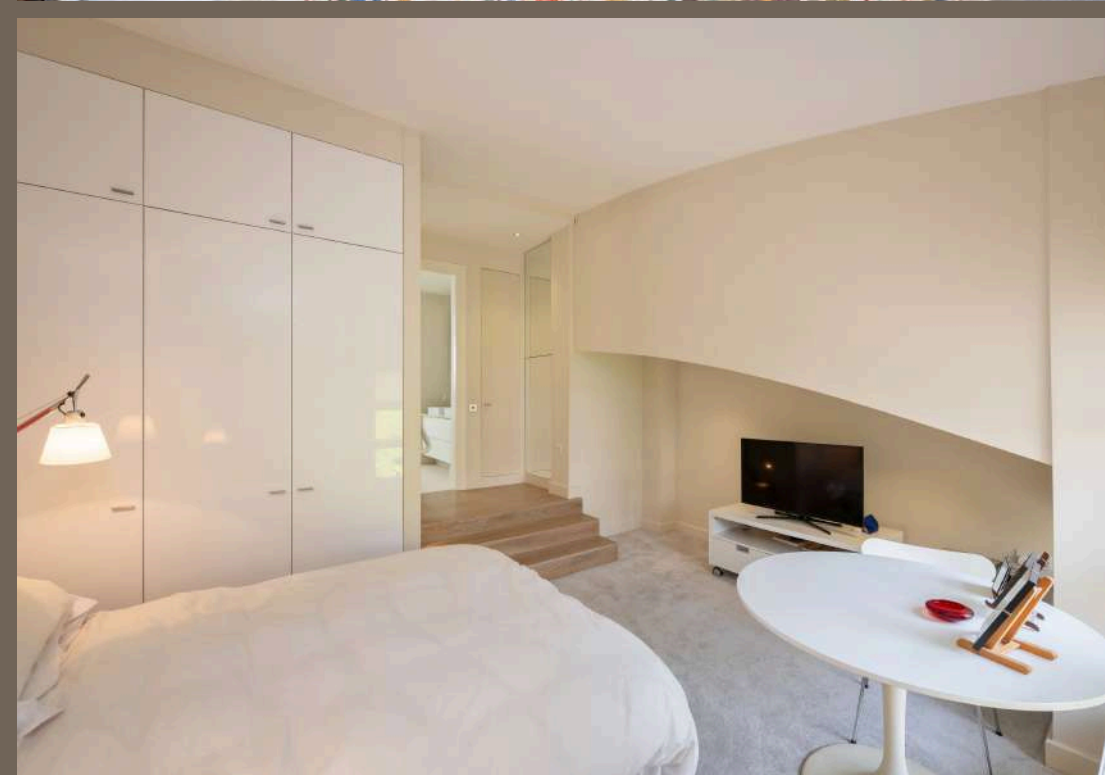


RECHARGE



Upstairs, four oversized bedrooms offer exceptional space and comfort, while the top-floor suite, complete with a generous en-suite, provides a private and luxurious retreat.









UNWIND

Each of the home's bathrooms are designed to balance function and luxury, with quality finishes and a timeless aesthetic. The top-floor en-suite is a true highlight - oversized and indulgent.

