



**3 Bed  
Apartment  
located  
in Camberwell**

**£2,750 Per Month**



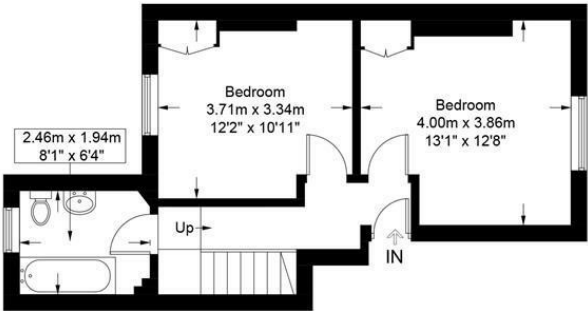
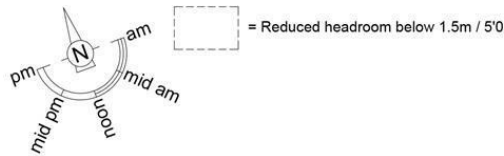
ORLANDO REID



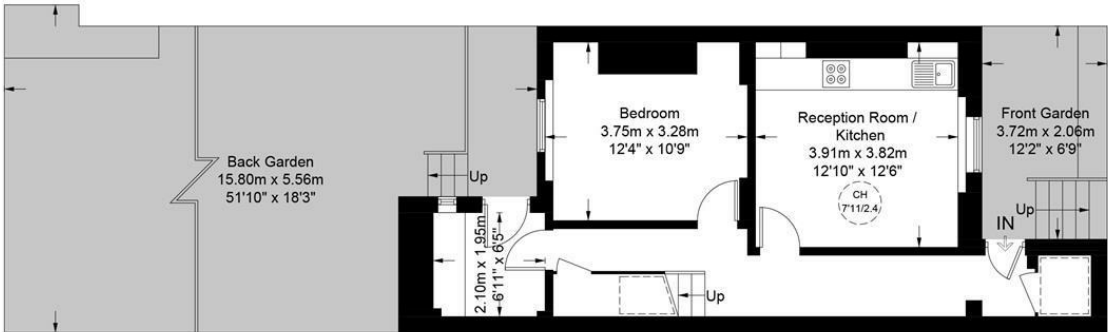
Flaxman Road, SE5

Approximate Gross Internal Area = 921 sq ft / 85.6 sq m

Restricted Height = 20 sq ft / 1.9 sq m



Upper Ground Floor



Lower Ground Floor



This plan is for layout guidance only and is not drawn to scale unless stated. All dimensions, including windows, doors, and the Total Gross Internal Area (GIA), are approximate. For precise measurements, please consult a qualified architect or surveyor before making any decisions based on this plan.



DIRECTIONS

CONTACT

1-3 Old Town  
Clapham  
London  
SW4 0JT

E: [lettings@orlandoreid.co.uk](mailto:lettings@orlandoreid.co.uk)  
T: 020 7627 3197  
[www.orlandoreid.co.uk](http://www.orlandoreid.co.uk)

Energy Efficiency Rating		
	Current	Potential
Very energy efficient - lower running costs		
(92 plus) A		
(81-91) B		
(69-80) C		
(55-68) D		
(39-54) E		
(21-38) F		
(1-20) G		
Not energy efficient - higher running costs		
EU Directive 2002/91/EC		
England & Wales		

ORLANDO REID