



ORLANDO REID

ORLANDO REID

Grantham Road, Clapham, Clapham, SW9

£365,000



ORLANDO REID

SUMMARY

Orlando Reid are pleased to present to the market this spacious, split-level, two double bedroom apartment with private balcony, offering unbelievable views out over the London skyline.

The property comprises an entrance hallway, featuring good space for storage, coats and other belongings leading through to a spacious reception room, and a full-length kitchen leading out to a charming private balcony perfect for sunny afternoons. Upstairs, the property features two well-proportioned double bedrooms, family bathroom, and separate WC, with another storage cupboard.

The location of the property is fantastic - and is always a 'people pleaser'. Located almost equidistant between Stockwell Underground (Northern/Victoria Line), and Clapham North, the property also benefits from ample local bus routes within very easy access. Clapham High Street rail station is also within easy reach.

2

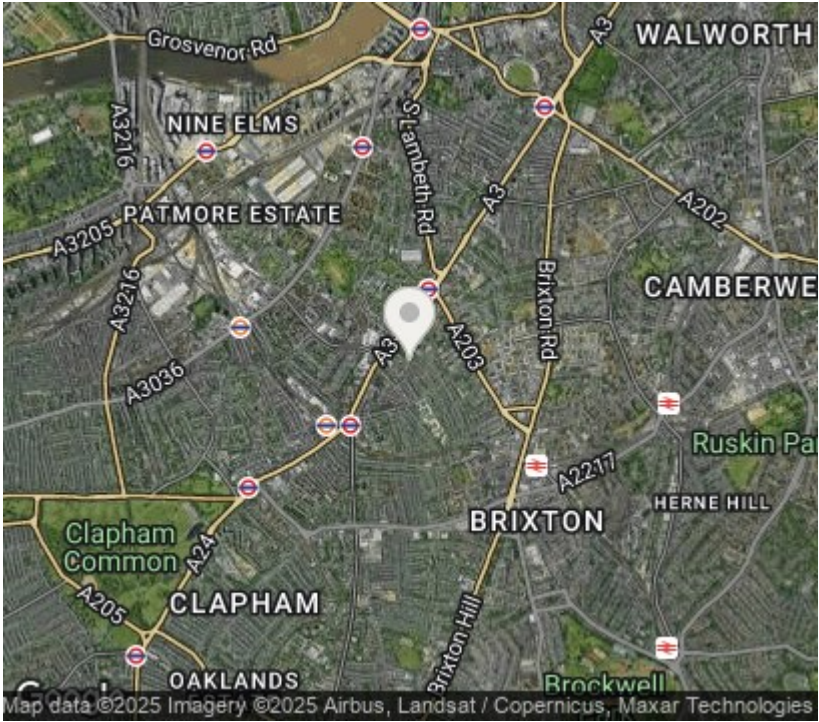
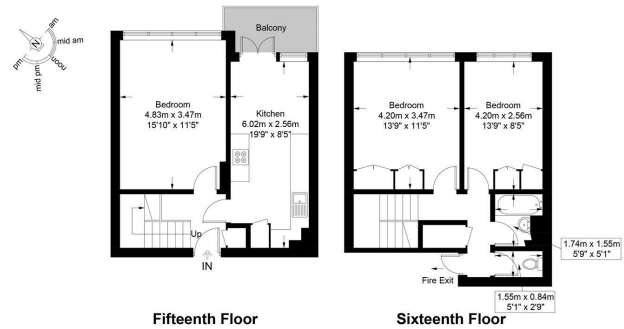
1

1

D



Pinter House, SW9 Approximate Gross Internal Area = 857 sq ft / 79.6 sq m



Orlando Reid Sales 1-3 Old Town, Clapham, London, SW4 0JT

Tel: 020 7627 3197

Email: sales@orlandoreid.co.uk

Agents Note: Whilst every care has been taken to prepare these sales particulars, they are for guidance purposes only. All measurements are approximate are for general guidance purposes only and whilst every care has been taken to ensure their accuracy, they should not be relied upon and potential buyers are advised to recheck the measurements.