



**4 Bed
House - Terraced
located in Knights
Hill**

£2,000

ORLANDO REID

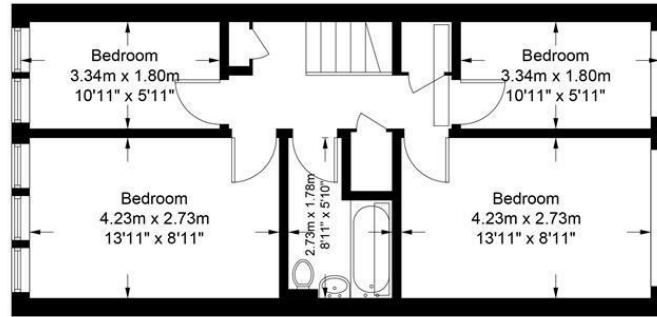
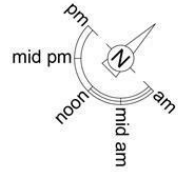


ORLANDO REID

Woodvale Walk, SE27

Approximate Gross Internal Area = 1047 sq ft / 97.3 sq m

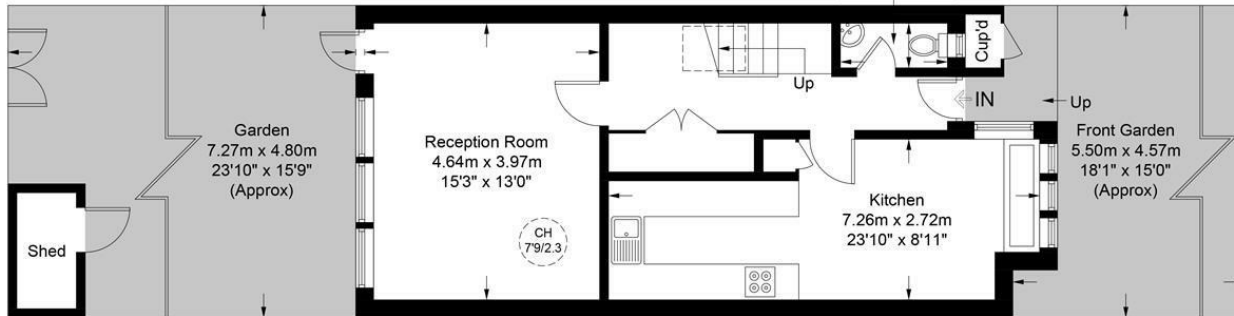
Restricted Height = 10 sq ft / 0.9 sq m



First Floor

= Reduced headroom below 1.5m / 5'0"

1.80m x 0.75m
5'11" x 2'6"
(Approx)



Ground Floor

DIRECTIONS

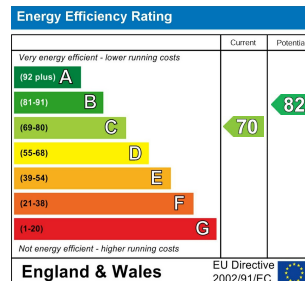
CONTACT

1-3 Old Town
Clapham
London
SW4 0JT

E: lettings@orlandoreid.co.uk
T: 020 7627 3197
www.orlandoreid.co.uk



This plan is for layout guidance only and is not drawn to scale unless stated. All dimensions, including windows, doors, and the Total Gross Internal Area (GIA), are approximate. For precise measurements, please consult a qualified architect or surveyor before making any decisions based on this plan.



ORLANDO REID