



**3 Bed  
Apartment  
located in Mursell  
Estate**

Asking Price £415,000

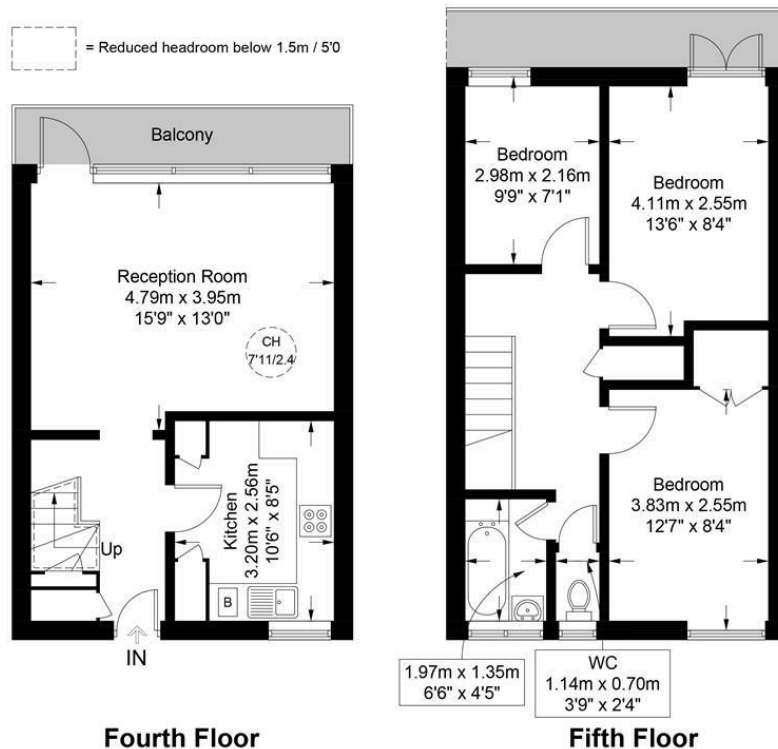
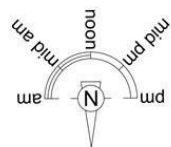


ORLANDO REID

# Mursell Estate, SW8

Approximate Gross Internal Area = 818 sq ft / 76.0 sq m

Restricted Height = 14 sq ft / 1.3 sq m

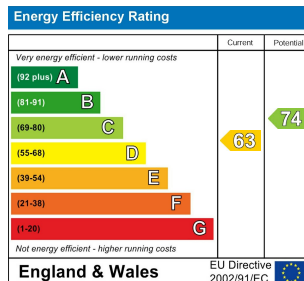


Fourth Floor

Fifth Floor



This plan is for layout guidance only and is not drawn to scale unless stated. All dimensions, including windows, doors, and the Total Gross Internal Area (GIA), are approximate. For precise measurements, please consult a qualified architect or surveyor before making any decisions based on this plan.



## DIRECTIONS

## CONTACT

153 Lavender Hill  
London  
SW11 5QJ

E: sales@orlandoreid.co.uk  
T: 020 3143 3900  
www.orlandoreid.co.uk

ORLANDO REID