

12 c Kendoa Road,
Clapham
SW4 7NB



£565,000 Leasehold

A delightful two double bedroom split level top floor flat of over 60 sq. m, ideally located minutes from Clapham High Street and Underground. This contemporary period conversion has a long lease and a superb open plan design.

Tucked away just off the vibrant Clapham High Street which boasts numerous restaurants, shops and bars, with transport links via Clapham Common or Clapham North (Northern Line) and Clapham High Street (Overground).

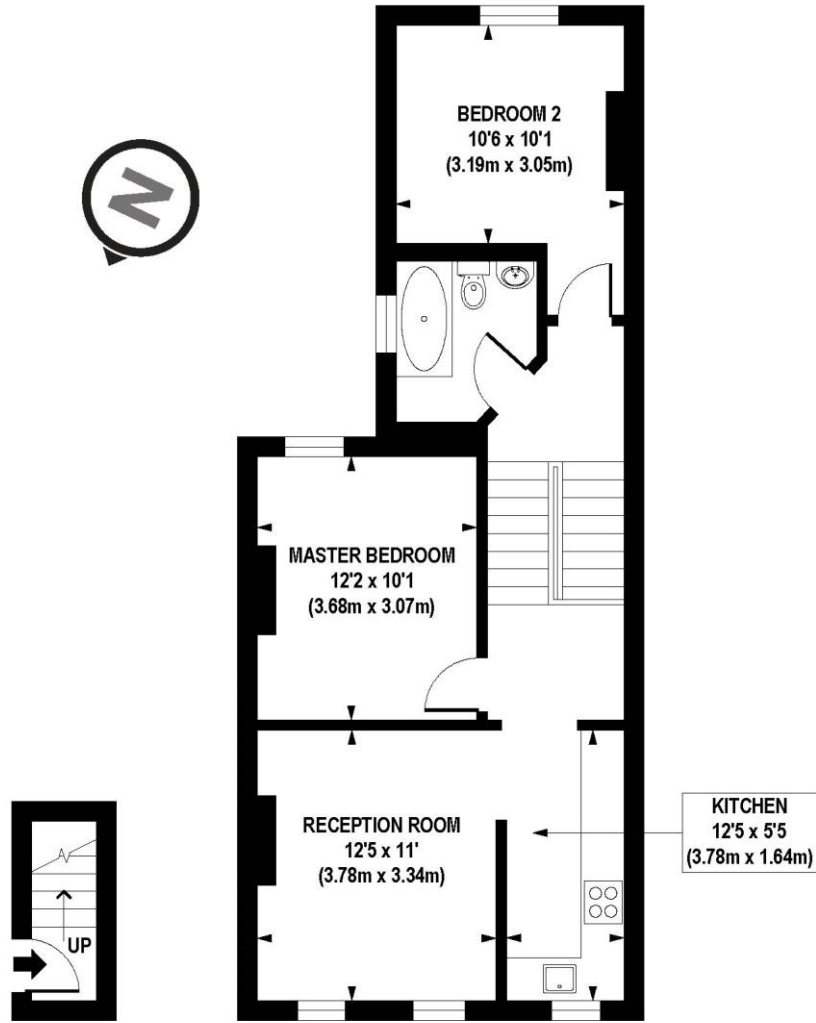
Key Features:

- No chain
- Long Lease
- Minutes from Clapham High Street and Underground
 - Contemporary open plan design
 - Recently Re-Furbished









GROUND FLOOR
GROSS INTERNAL
FLOOR AREA 24 SQ FT

FIRST FLOOR
GROSS INTERNAL
FLOOR AREA 628 SQ FT

APPROX. GROSS INTERNAL FLOOR AREA 652 sq. ft / 60.57 sq. m

Floorplan is for illustrative purposes only and is not to scale.
Every attempt has been made to ensure the accuracy of the floorplan shown, however all measurements, fixtures, fittings and data shown are an approximate interpretation for illustrative purposes only.
Liability for errors, omissions or mis-statement through negligence or otherwise is hereby excluded.

CP CREATIVE
PROPERTY MARKETING