



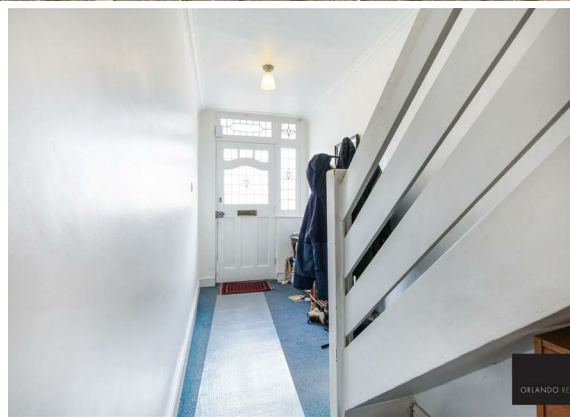
**4 Bed
House - Semi-
Detached
located in Mitcham**

£3,000 PCM

ORLANDO REID



ORLANDO REID



ORLANDO REID



ORLANDO REID

ORLANDO REID

Graham Road, CR4 2HA

Approx Gross Internal Area = 132 sq m / 1 421 sq ft

Driveway = 39 sq m / 320 sq ft

Garden = 59 sq m / 635 sq ft

Total= 230 sq m / 2 476 sq ft



The Floor plan is not to scale and measurements and areas shown are approximate and therefore should be used for illustrative purposes only. The plan has been prepared in accordance with the RICS code of Measuring Practice and whilst we have confidence in the information produced it must not be relied on. Maximum lengths and widths are represented on the floor plan. If there is any aspect of particular importance, you should carry out or commission your own inspection of the property.

Copyright @ BLEUPLAN

Energy Efficiency Rating		
	Current	Potential
Very energy efficient - lower running costs		
(92 plus) A		
(81-91) B		
(69-80) C		
(55-68) D		
(39-54) E		
(21-38) F		
(1-20) G		
Not energy efficient - higher running costs		
England & Wales	EU Directive 2002/91/EC	

DIRECTIONS

CONTACT

1-3 Old Town
Clapham
London
SW4 0JT

E: lettings@orlandoreid.co.uk
T: 020 7627 3197
www.orlandoreid.co.uk

ORLANDO REID