



**2 Bed
Apartment
located in Nine
Elms**

£3,250 PCM



ORLANDO REID

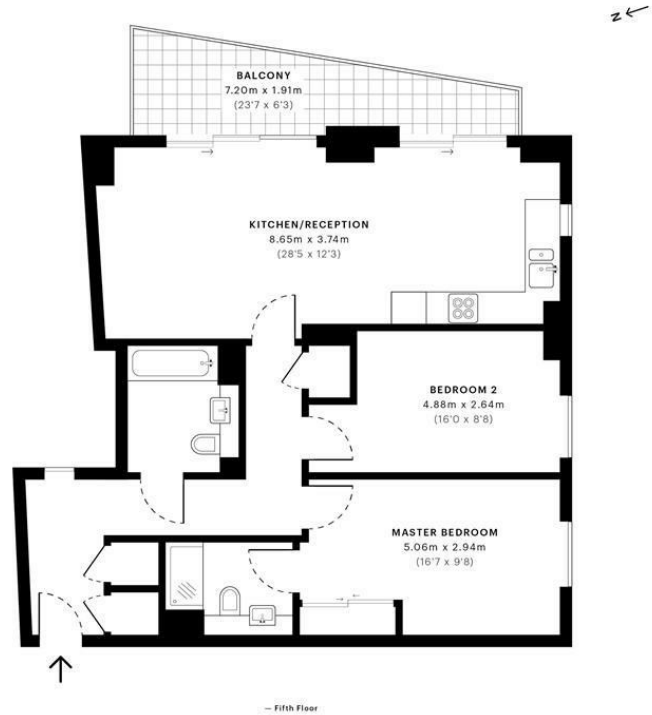


Pinto Tower, SW8

CAPTURE DATE:
06/11/2019

LASER SCAN POINTS:
32,600,572

GROSS INTERNAL AREA
79.1 Sqm / 851.4 Sqft



GROSS INTERNAL AREA
The footprint of the property
79.1 Sqm / 851.4 Sqft

NET AREA (INTERNAL)
Excludes walls and external features
75.8 Sqm / 815.6 Sqft

EXTERNAL STRUCTURAL FEATURES
Balconies, terraces, verandas etc.
9.2 Sqm / 99.3 Sqft

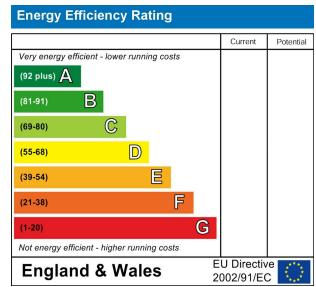
RESTRICTED HEAD HEIGHT
Limited use area under 1.8m
0.0 Sqm / 0.0 Sqft

Spec floor plans are produced in accordance with the Royal Institution of Chartered Surveyors' Property Measurement Standards. Plots and gardens are illustrative only and are excluded from all area calculations. Due to rounding, numbers may not add up precisely. All measurements shown for the individual room heights and widths are the maximum points of measurements captured in the scan.

IPMS 3B RESIDENTIAL
88.4 Sqm / 951.9 Sqft

IPMS 3C RESIDENTIAL
85.1 Sqm / 916.7 Sqft

SPEC ID
5dct4e285ef7390a20f74651



DIRECTIONS

CONTACT

1-3 Old Town
Clapham
London
SW4 0JT

E: lettings@orlandoreid.co.uk
T: 020 7627 3197
www.orlandoreid.co.uk

