



**Hermitage Street, Paddington, W2**

Asking Price £685,000

ORLANDO REID



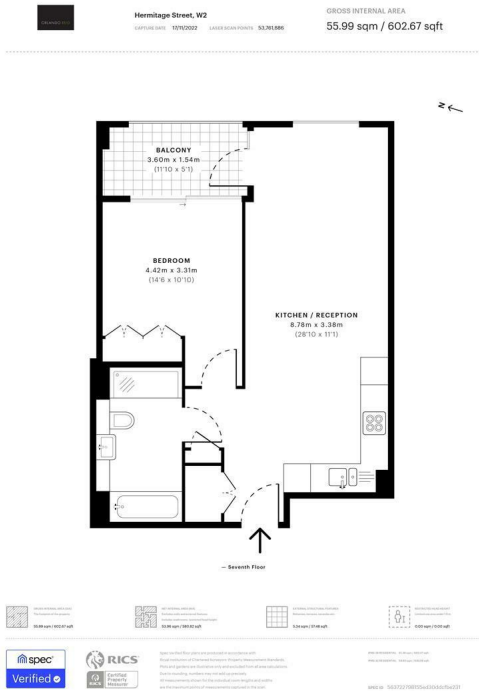
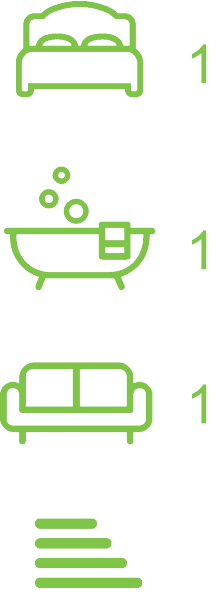
# SUMMARY

Orlando Reid are pleased to present to the market this beautiful one bedroom apartment set within a beautiful development from Taylor Wimpey Central London located within the heart of the Paddington Basin.

The accommodation comprises a generous open plan living space leading to a private East-facing balcony. The bedroom and bathroom are both also well-proportioned, and in-built storage is available for the prospective purchaser(s).

The apartment benefits from use of the residents lounge and roof terrace, day porter (Block 1) and 24 hour concierge (Blocks 2 & 3), lifts, and comfort cooling.

The property benefits from a fantastic location with a great mix of connectivity and lifestyle. Paddington Station is within very easy reach providing a fantastic array of transport links - including the Heathrow Express.



Orlando Reid Sales 1-3 Old Town, Clapham, London, SW4 0JT

Tel: 020 7627 5566

Email: sales@orlandoreid.co.uk

Agents Note: Whilst every care has been taken to prepare these sales particulars, they are for guidance purposes only. All measurements are approximate and for general guidance purposes only and whilst every care has been taken to ensure their accuracy, they should not be relied upon and potential buyers are advised to recheck the measurements.