

Flat 3, 77 Larkhall Rise,  
Clapham,  
SW4 6HS



£575,000 Share of Freehold

A delightful two double bedroom first floor flat located in an attractive well maintained period property a short walk from Clapham Old Town and the Underground. This superb flat comes with a share of the freehold and comes with no onward chain.

Key Features:

- A very well presented two double- bedroom flat
  - Superb spacious living room
  - Plenty of natural character
    - Share of Freehold
    - No onward chain
  - Option of parking space
- Short walk from Clapham Old Town







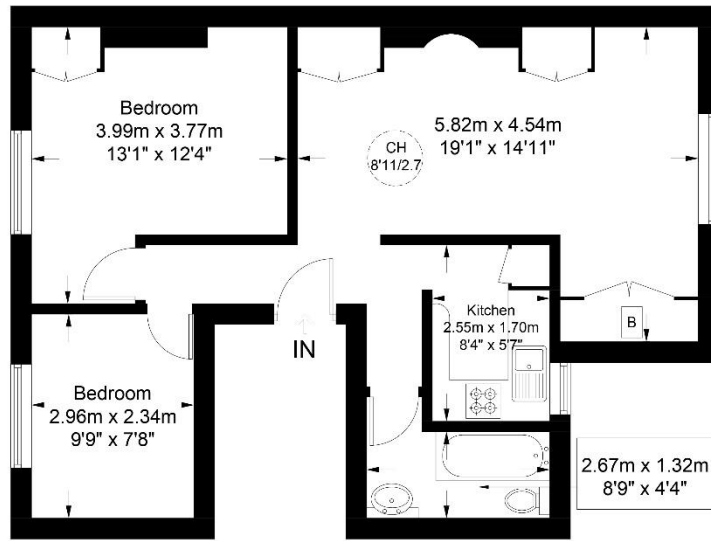
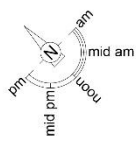
ORLANDO REID



ORLANDO REID

Larkhall Rise, SW4

Approximate Gross Internal Area = 596 sq ft / 55.4 sq m



First Floor



This plan is for layout guidance only and is not drawn to scale unless stated. All dimensions, including windows, doors, and the Total Gross Internal Area (GIA), are approximate. For precise measurements, please consult a qualified architect or surveyor before making any decisions based on this plan.



Certified  
Property  
Measurer