



ORLANDO REID

Central Avenue, Fulham Riverside, Fulham Riverside,
SW6
£6,500



ORLANDO REID

SUMMARY

A superb 4-bedroom duplex apartment for sale in Fulham Riverside W6, the duplex apartment is located on the fifth and sixth floors of this modern development and extends to approximately 153.3 sq. m (1650 sq. ft.).

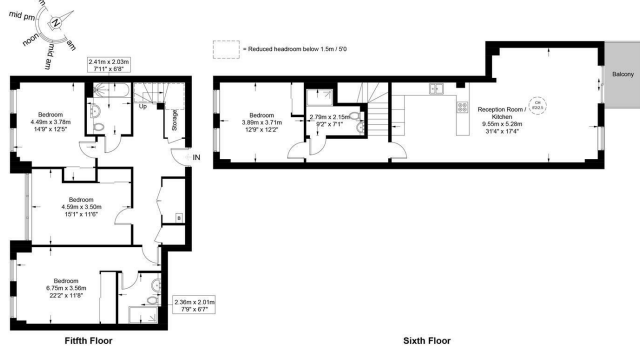
This apartment benefits from stylish contemporary interiors throughout and comprises light and spacious open plan living, dining and kitchen areas, four spacious bedrooms (one with en-suite) and two modern bathroom suites.

Fulham Riverside is a major new destination for South West London and a fabulous place to live located on the northern bank of the river Thames. Built on one of the few remaining undeveloped stretches of riverside in central London, Fulham Riverside is located just a short walk from both Chelsea Harbour and the famous King's Road.



Ravensbourne Apartments, SW6 Approximate Gross Internal Area = 1650 sq ft / 153.3 sq m

Restricted Height = 28 sq ft / 2.6 sq m



PRIME PERSPECTIVES

This plan is for layout guidance only and is not drawn to scale unless stated. All dimensions, including windows, doors, and the Total Gross Internal Area (GIA), are approximate. For precise measurements, please consult a qualified architect or surveyor before making any decisions based on this plan.



Orlando Reid Sales 1-3 Old Town, Clapham, London, SW4 0JT

Tel: 020 7627 5566

Email: sales@orlandoreid.co.uk

Agents Note: Whilst every care has been taken to prepare these sales particulars, they are for guidance purposes only. All measurements are approximate are for general guidance purposes only and whilst every care has been taken to ensure their accuracy, they should not be relied upon and potential buyers are advised to recheck the measurements.