



**0 Bed  
Studio  
located  
in Stockwell**

**£250,000**



**ORLANDO REID**



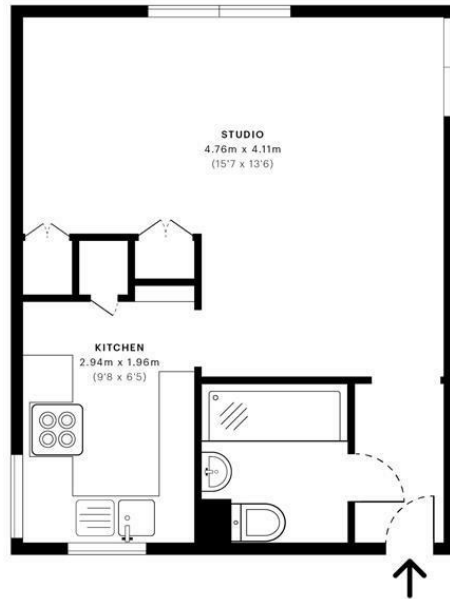
Teversham Lane, SW8

CAPTURE DATE:  
31/10/2019

LASER SCAN POINTS:  
17,571,633

GROSS INTERNAL AREA  
28.7 Sqm / 308.5 Sqft

z ←



— First Floor

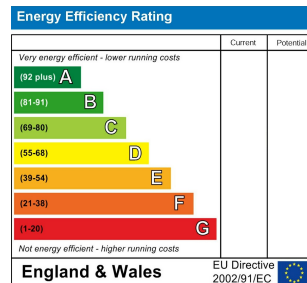
 <b>GROSS INTERNAL AREA</b> The footprint of the property <b>28.7 Sqm / 308.5 Sqft</b>	 <b>NET AREA (INTERNAL)</b> Excludes walls and external features <b>27.4 Sqm / 294.9 Sqft</b>	 <b>EXTERNAL STRUCTURAL FEATURES</b> Balconies, terraces, verandas etc. <b>0.0 Sqm / 0.0 Sqft</b>	 <b>RESTRICTED HEAD HEIGHT</b> Limited use area under 1.8m <b>0.0 Sqm / 0.0 Sqft</b>
---	--	--	---



Spec floor plans are produced in accordance with the Royal Institution of Chartered Surveyors' Property Measurement Standards. Plans and gardens are illustrative only and are excluded from all area calculations. Due to rounding, numbers may not add up precisely. All measurements shown for the individual room lengths and widths are the maximum points of measurements captured in the scan.

IPMS 3B RESIDENTIAL  
29.1 Sqm / 313.8 Sqft  
IPMS 3C RESIDENTIAL  
27.9 Sqm / 300.2 Sqft

SPEC ID:  
5db841274f9de096e430eb



## DIRECTIONS

## CONTACT

1-3 Old Town  
Clapham  
London  
SW4 0JT

E: [lettings@orlandoreid.co.uk](mailto:lettings@orlandoreid.co.uk)  
T: 020 7627 3197  
[www.orlandoreid.co.uk](http://www.orlandoreid.co.uk)

ORLANDO REID