

FOR SALE

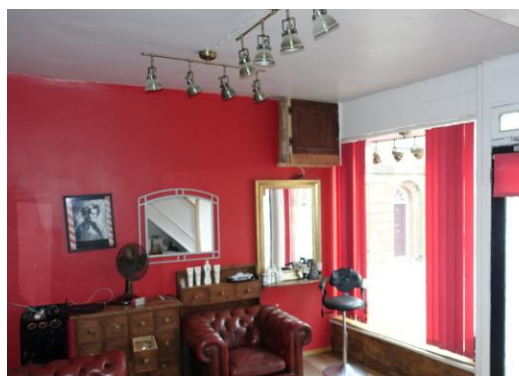


Church Street, Crewkerne

**Commercial / Potential for
Residential End Terraced House**

Asking Price Of £95,000


MARTIN&CO

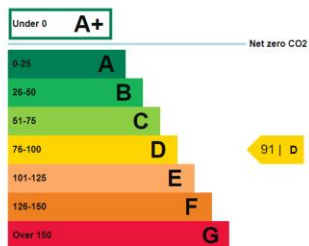


11 Church Street

- Investment Opportunity
- Town Centre Location
- Potential to Improve

Energy efficiency rating for this property

This property's current energy rating is D.

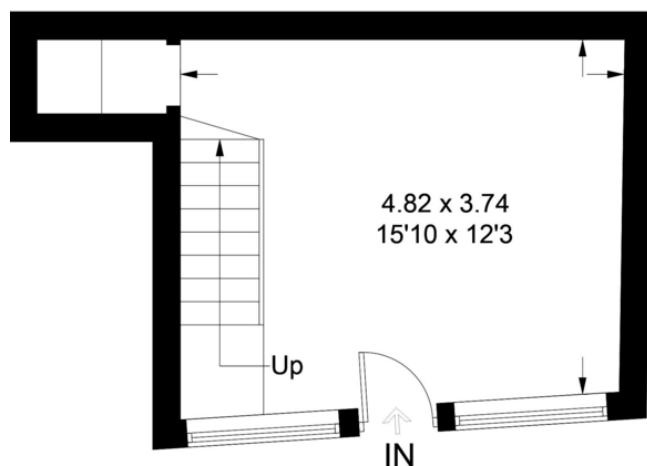


Properties are given a rating from A+ (most efficient) to G (least efficient).

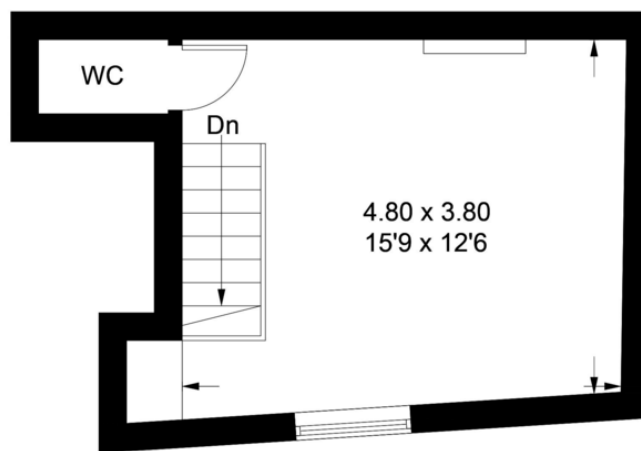
Properties are also given a score. The larger the number, the more carbon dioxide (CO2) your property is likely to emit.

This 2-storey traditional stone cottage in the heart of the market town of Crewkerne is offered to the market having been utilised as a gentleman's barber shop by the current owner.

In need of modernisation and renovation, the ground floor houses the barber shop area plus a walk-in storage cupboard. The first floor is open plan and has potential to create a bedroom and bathroom, converting the property into a one-bedroom home.



Ground Floor



First Floor

Illustration for identification purposes only, measurements are approximate, not to scale. floorplansUsketch.com © (ID720742)

Martin & Co Yeovil

18 Princes Street • Yeovil • BA20 1EW
T: 01935 420555 • E: yeovil@martinco.com

<http://www.martinco.com>



Accuracy: References to the Tenure of a Property are based on information supplied by the Seller. The Agent has not had sight of the title documents. A Buyer is advised to obtain verification from their Solicitor. Items shown in photographs including but not limited to carpets, fixtures and fittings are not included unless specifically mentioned within the sales particulars. They may however be available by separate negotiation. Buyers must check the availability of any property and make an appointment to view before embarking on any journey to see a property. No person in the employment of the agent has any authority to make any representation about the property, and accordingly any information given is entirely without responsibility on the part of the agents, sellers(s) or lessors(s). Any property particulars are not an offer or contract, nor for part of one. **Sonic / laser Tape:** Measurements taken using a sonic / laser tape measure may be subject to a small margin of error. **All Measurements:** All Measurements are Approximate. **Services Not tested:** The Agent has not tested any apparatus, equipment, fixtures and fittings or services and so cannot verify that they are in working order or fit for the purpose. A Buyer is advised to obtain verification from their Solicitor or Surveyor.