

FOR SALE



Park Road, Yeovil

1 Bedroom, 1 Bathroom, Apartment

£75,000

MARTIN&CO



2 Old Sarum House

- Gross Rental Yield 9%
- Service Charge £1446
- Peppercorn Ground Rent
- Ideal Investment Property
- Town Centre Location

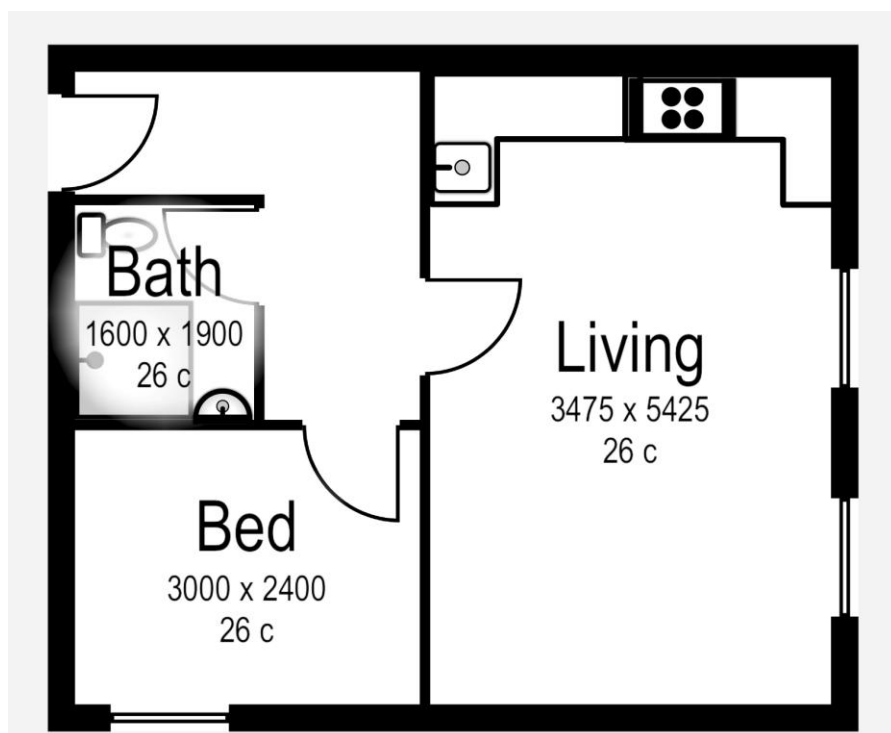
Energy Efficiency Rating		Current	Potential
Very energy efficient - lower running costs			
(92-100)	A		
(81-91)	B		
(69-80)	C	71	75
(55-68)	D		
(39-54)	E		
(21-38)	F		
(1-20)	G		
Not energy efficient - higher running costs			
England, Scotland & Wales		EU Directive 2002/91/EC	

ATTENTION INVESTORS!!

This first floor town centre apartment comprises a private front door from the communal entrance with hall leading to the good size studio style lounge/kitchen/diner with fully fitted kitchen with built in electric cooker washer/dryer, fridge & freezer.

The laminate flooring, double aspect windows and high ceilings give the room a modern, contemporary feel. From the hall is a double bedroom and a shower room. Gas central heating is installed.

Currently tenanted with a gross annual rental yield of 9%.



Martin & Co

18 Princes Street • Yeovil • BA20 1EW
T: 01935 420555 • E: yeovil@martinco.com

01935420555

<http://www.martinco.com>



Accuracy: References to the Tenure of a Property are based on information supplied by the Seller. The Agent has not had sight of the title documents. A Buyer is advised to obtain verification from their Solicitor. Items shown in photographs including but not limited to carpets, fixtures and fittings are not included unless specifically mentioned within the sales particulars. They may however be available by separate negotiation. Buyers must check the availability of any property and make an appointment to view before embarking on any journey to see a property. No person in the employment of the agent has any authority to make any representation about the property, and accordingly any information given is entirely without responsibility on the part of the agents, sellers(s) or lessors(s). Any property particulars are not an offer or contract, nor for part of one. **Sonic / laser Tape:** Measurements taken using a sonic / laser tape measure may be subject to a small margin of error. **All Measurements:** All Measurements are Approximate. **Services Not tested:** The Agent has not tested any apparatus, equipment, fixtures and fittings or services and so cannot verify that they are in working order or fit for the purpose. A Buyer is advised to obtain verification from their Solicitor or Surveyor.