



## Sophora House, Battersea, SW11

Your partners in property





## A MASTERPIECE IN MODERN DESIGN

The Vista building is located just off Chelsea Bridge, looking over the beautiful Green spaces of Battersea Park.



Local Authority: London Borough of Wandsworth

Council Tax Band: E

Furniture: Available furnished

Minimum length of tenancy: 12 months

Deposit amount: £4,038.46

Available date: 17/01/2025

**Guide price: £3,500 per calendar month**

This property consists of two bedrooms and an open plan kitchen and reception room. The reception room is finished with beautiful wooden flooring leading to a fully integrated kitchen with modern appliances.

The principal bedroom is generously sized, featuring built-in wardrobes and an en-suite bathroom, and the additional bedroom has direct access to a private balcony also accessible from the reception room

Residents of the Vista development further benefit from a 24-hour concierge, a hydrotherapy pool and a gym. One underground parking space in the neighbouring Chelsea Bridge Wharf development is available by separate negotiation.

add disclaimer text here



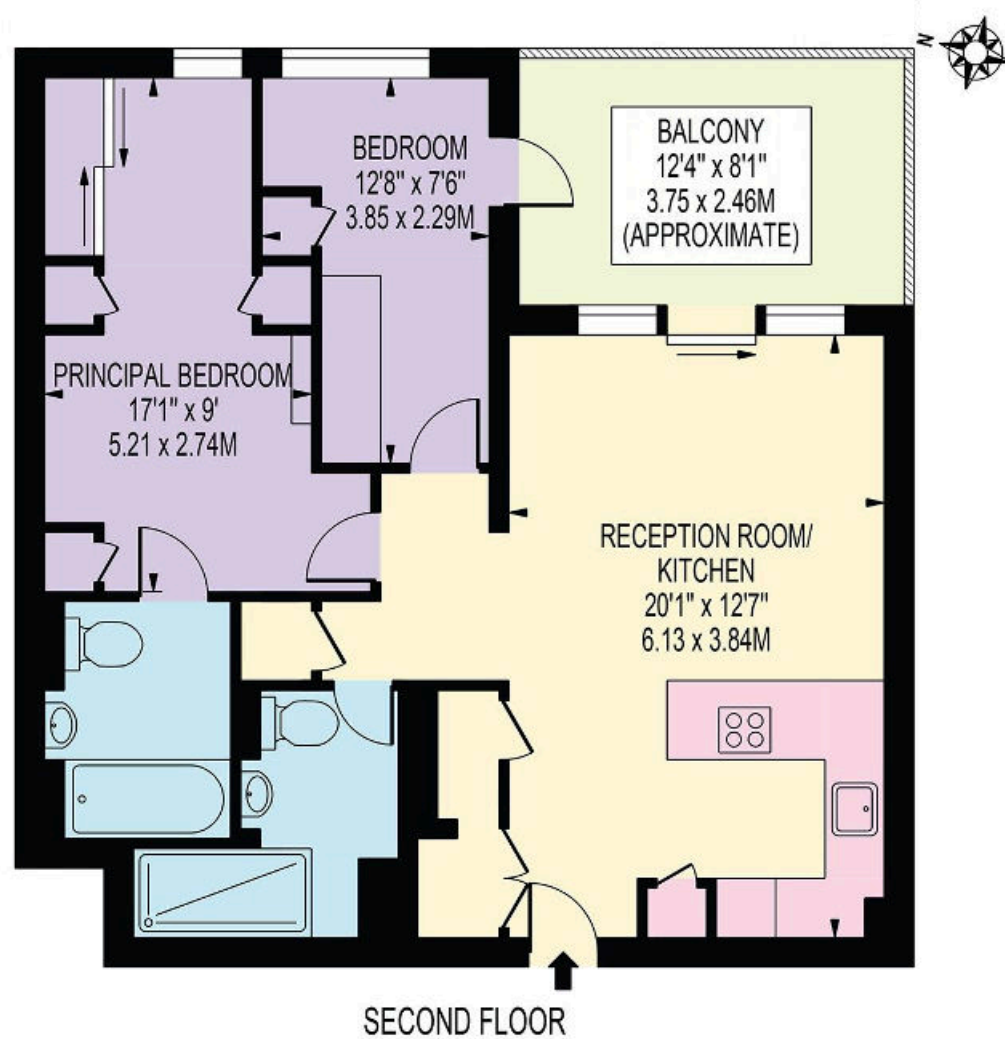






## SOPHORA HOUSE, SW11

**Approximate Gross Internal Floor Area**  
**62.41 sq m / 672 sq ft**



This plan is for layout guidance only. Not drawn to scale unless stated. Windows and door openings are approximate. Whilst every care is taken in the preparation of this plan, please check all dimensions, shapes and compass bearings before making any decisions reliant upon them. (ID767266)