



Penny Cottage, 83a Hill Road, Clevedon, BS21 7PL
£395,000

Steven
Smith



Penny Cottage is as pretty as the name would suggest. This very beautiful home will not disappoint and incorporates a luxurious bathroom and a beautifully built kitchen with oak worktops. The bedrooms are both doubles and the lounge even has a view to the Bristol channel. This cottage has style and charm throughout. Step out of your front door and you are within yards of a number of restaurants, wine bars and boutique shops on Hill Road. This is Clevedon at its very best.

Accommodation (all measurements approximate)

GROUND FLOOR

Take the stone steps up from Hill Road and proceed straight ahead through the pretty arched passageway. At the end a private gate on your right will open to a pretty courtyard garden with a beautiful raspberry coloured front door now on your right.

Reception Hall

Wood effect flooring, understairs cupboard. Situated between the two bedrooms which are located on the ground floor is a fabulous walk in dressing room. All the doors have been handmade in reclaimed wood and are a great feature of the cottage.

Bedroom 1 11' 6" x 11' 3" (3.50m x 3.43m)

With windows on either side.

Bedroom 2 10' 4" x 8' 10" (3.15m x 2.69m)

With natural light from a frosted window. Wood effect floor.

Bathroom

A luxurious bathroom with a bath and shower above. Rectangular washbasin with a chrome towel rail and rack below and WC. Fabulous tiling and a chrome ladder style radiator. Cupboard with plumbing for washing machine. Double glazed window.

FIRST FLOOR

From the entrance hall a pretty staircase rises up into the:

Kitchen/Dining Room 16' 5" x 9' 6" (5.00m x 2.89m)

Beautifully fitted chalk coloured shaker style cupboard and drawer units with integrated appliances which include a NEFF oven, microwave, ceramic hob with Franke stainless steel extractor hood. Integrated dishwasher, fridge and freezer. Stunning oak worktops also extend around the Belfast sink. The kitchen complements the character of the cottage and contrasts beautifully with the dark painted original floorboards and the white walls. Two double glazed windows in character with the property and looking down onto the beautiful courtyard gardens. Useful cupboard which also houses the Vaillant fired central heating boiler.

Lounge 18' 0" x 10' 7" (5.48m x 3.22m)

Decorated with great style and incorporating two oak window seats with double glazed windows, one of which even enjoys a view to the Bristol Channel.

Features include wall lighting, moulded skirtings and a reclaimed wooden door which opens to a useful shelved cupboard.

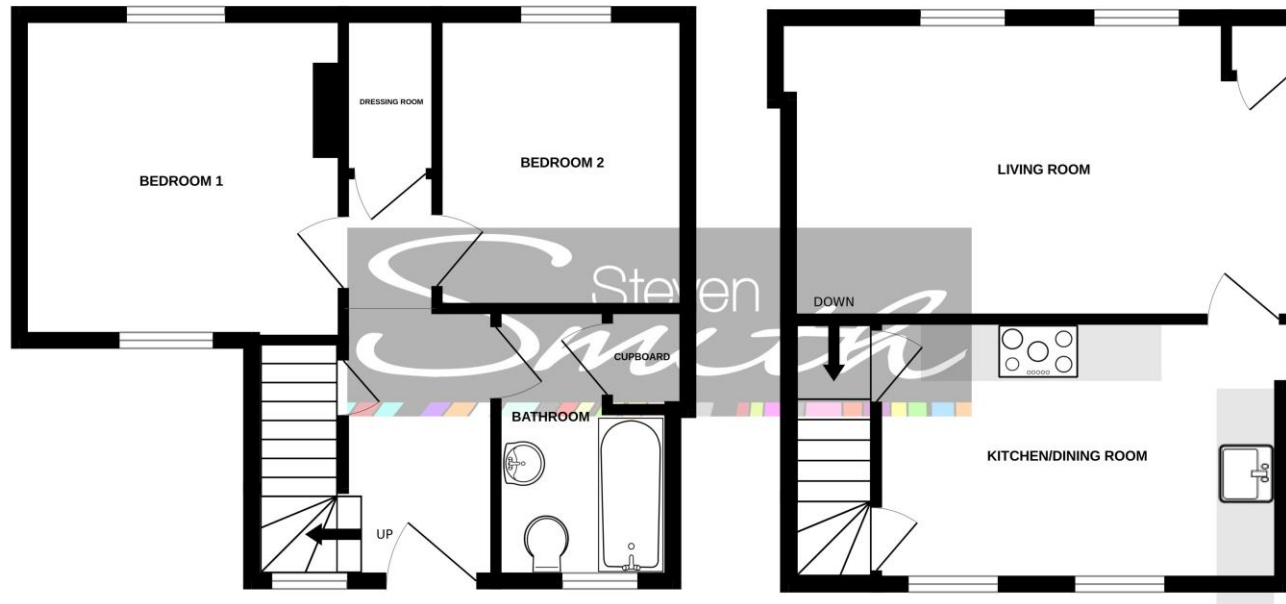
OUTSIDE

The courtyard garden sits immediately behind the cottage with a rocky outcrop providing a magnificent backdrop. This is a superb spot to entertain outdoors and to enjoy that glass of wine.



GROUND FLOOR

1ST FLOOR



Whilst every attempt has been made to ensure the accuracy of the floorplan contained here, measurements of doors, windows, rooms and any other items are approximate and no responsibility is taken for any error, omission or mis-statement. This plan is for illustrative purposes only and should be used as such by any prospective purchaser. The services, systems and appliances shown have not been tested and no guarantee as to their operability or efficiency can be given.
Made with Metropix ©2025



Semi Detached House



Freehold



2



Garden



1



A



1

EPC D



Gas Central Heating



Health & Safety Statement

We would like to bring to your attention the potential risks of viewing a property that you do not know. Please take care as we cannot be responsible for accidents that take place during a viewing.

Please Note

Items shown in photographs are not included unless specifically mentioned within the sales particular, they may be available by separate negotiation. Any services, heating systems, appliances or installations referred to in these particulars have not been tested and no guarantee can be given that these are in working order. The photographs have been taken using a wide angle lens.

A: 12 The Triangle, Clevedon, North Somerset BS21 6NG

T: 01275 877771 W: stevensmithhomes.co.uk

E: steven@stevensmithhomes.co.uk FB: @stevensmithhomes

Steven Smith Town & Country Estate Agents Ltd. Registered Address: 12 The Triangle, Clevedon, North Somerset BS21 6NG. Registration Number: 7177353. Registered in England & Wales

