



Ferndale, Hyde SK14 4GP

HUNTERS[®]
EXCLUSIVE



Ferndale, Hyde SK14 4GP

Presenting an immaculate detached house for sale, situated in an enviable, sought-after location. This property is within easy reach of public transport links, local amenities, and a stone's throw away from green spaces and scenic walking routes, making it an ideal home for families. The vicinity of nearby schools and the historic St Mary's Church adds to the charm of the locale.

The property holds four spacious bedrooms, each featuring built-in wardrobes. The master bedroom is complemented by a luxurious en-suite. The property also boasts two reception rooms, one with large windows flooding the room with natural light, and the other offering a beautiful garden view with access to the south-facing garden.

The heart of the home is a beautifully designed open-plan kitchen, blessed with an abundance of natural light. It features a breakfast area and a separate utility room adding to the functionality of the space. The property also benefits from a separate office room, a WC, and ample storage space, ensuring every need is catered for.

Externally, the property enjoys a large driveway leading to a double garage with reinforced doors. The south-facing garden is a real treat, providing a perfect space for relaxation or family activities. Further unique features include an orangery.

With a Council Tax Band E, this property is a rare opportunity to acquire a family home in perfect condition with everything you could wish for.
EPC -TBC





Lounge

15'4 x 14'0

Dining Room

10'10 x 8'10

Kitchen

16'6 x 8'10

Office

7'5 x 5'7

Bedroom 1

13'11 x 13'6

Bedroom 2

11'2 x 10'7

Bedroom 3

13'7 x 10'1

Bedroom 4

10'1 x 8'11

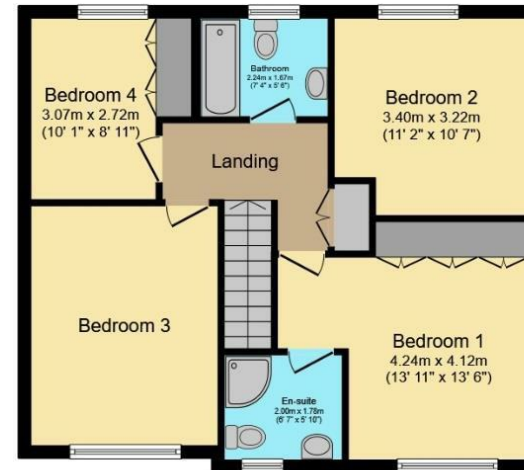




These particulars are intended to give a fair and reliable description of the property but no responsibility for any inaccuracy or error can be accepted and do not constitute an offer or contract. We have not tested any services or appliances (including central heating if fitted) referred to in these particulars and the purchasers are advised to satisfy themselves as to the working order and condition. If a property is unoccupied at any time there may be reconnection charges for any switched off/disconnected or drained services or appliances - All measurements are approximate. If you are thinking of selling your home or just curious to discover the value of your property, Hunters would be pleased to provide free, no obligation sales and marketing advice. Even if your home is outside the area covered by our local offices we can arrange a Market Appraisal through our national network of Hunters estate agents.



Ground Floor

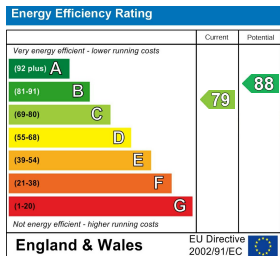


First Floor

Total floor area 139.1 sq.m. (1,497 sq.ft.) approx

This floor plan is for illustrative purposes only. It is not drawn to scale. Any measurements, floor areas (including any total floor area), openings and orientation are approximate. No details are guaranteed, they cannot be relied upon for any purpose and they do not form part of any agreement. No liability is taken for any error, omission or misstatement. A party must rely upon its own inspection(s).

Powered by www.focalagent.com



Viewing Arrangements

Strictly by prior appointment only through the agent Hunters Hunters Stalybridge & Tameside -
0161 870 1980 <https://www.hunters.com>

HUNTERS®
EXCLUSIVE



HUNTERS®
EXCLUSIVE