

↓ High Quality Offices To Let



KNIGHT & LEE

THIS Workspace - A new home for your business.

Property Consultants Vail Williams are proud to be offering a series of high quality serviced office spaces within the historic Knight & Lee building.

THIS
workspace.

Info

Self-contained Offices Ranging in Size from 150 sq.ft (6-person office) up to 13,000 sq. ft. (220+ people across two floors) plus everything in between.

Knight & Lee
THIS Workspace
Palmerston Road
Southsea, Portsmouth
PO5 3QE

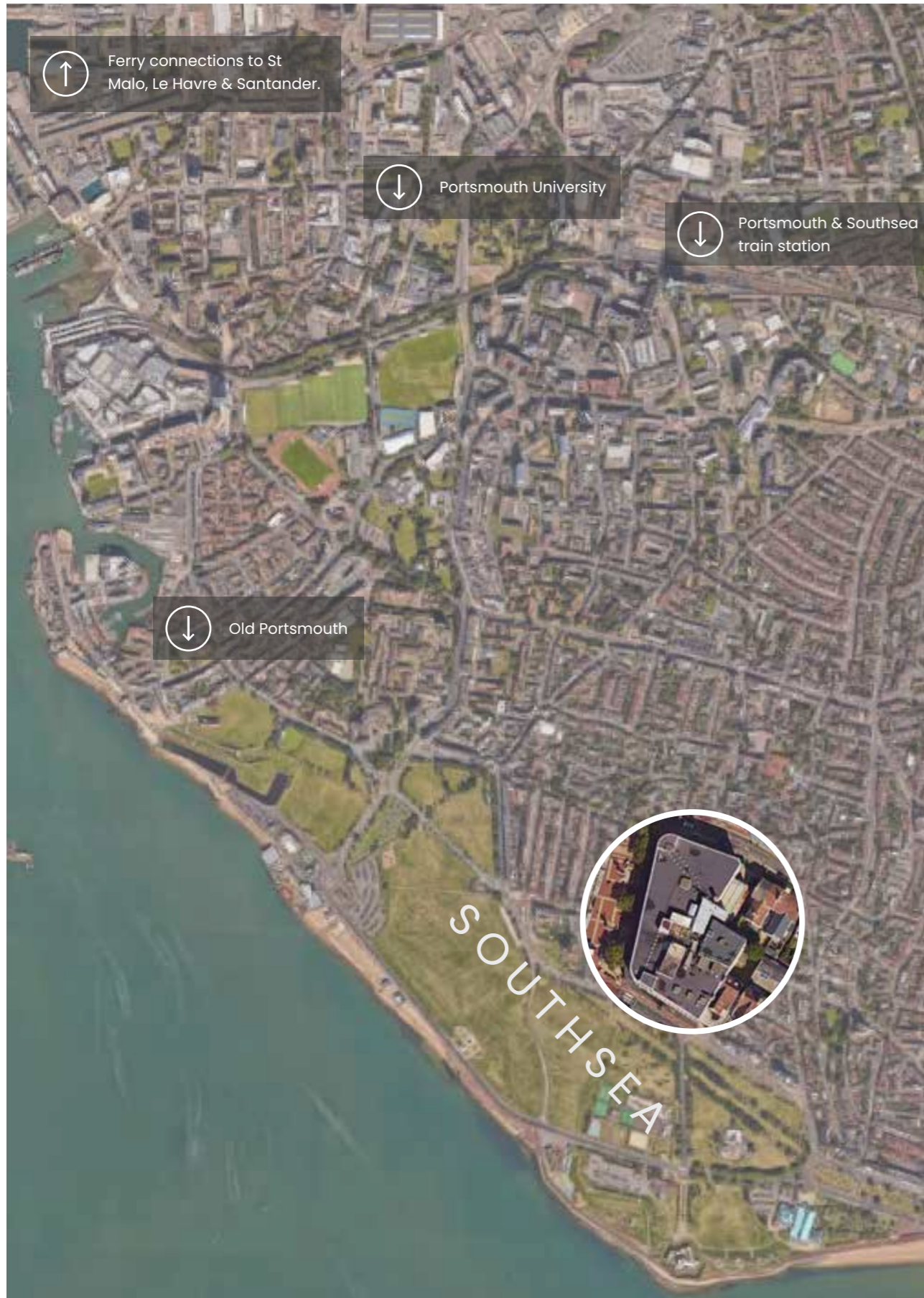
Contact

Russell Mogridge
E: rmogridge@vailwilliams.com
T: 023 8082 0900
T: 07815 737 175

Matt Cureton
E: mcureton@vailwilliams.com
T: 023 8082 0900
T: 07786 735596



THAT GROUP



Location

A UK & EUROPEAN GATEWAY

THIS Workspace will be created within one of Southsea's most recognisable and accessible locations within the former John Lewis department store in the Knight & Lee building. Located amongst shops, cafes and restaurants. Portsmouth & Southsea and Portsmouth Harbour Train station, Isle of Wight Ferry & bus terminal, Gunwharf Quays are all within approximately 1 mile and wonderful Southsea seafront is just 600m away.

A perfect home base for teams based in Dorset and Hampshire

- ← Southampton 30m
Bournemouth 1hr
- ↑ Basingstoke 50m
Reading 1hr 20m
- ↗ Guildford 50m
London 1hr 40m
- Brighton 1hr 10m
Folkestone 2hr 10m



Portsmouth's south coast location has made it a UK and European gateway city. The Portsmouth International Port is Britain's best connected port, providing eight freight and passenger routes to France, Spain and the Channel Islands.

With the M275 connecting the city centre to the M27 there is immediate access to the UK's motorway network, providing fast access to Bournemouth, Southampton, Heathrow and Gatwick airports.



EPR Architects

KNIGHT & LEE

Private Offices at Knight & Lee



Self contained offices ranging from 500 sq. ft. up to 13,000 sq. ft. plus everything inbetween.

THIS Workspace provides fully designed, secure and furnished private workspaces with private kitchens and meeting rooms. However, it does not stop there. In addition to these specialist places, members have access to the communal lounges, meeting rooms, kitchens and breakout spaces located throughout the building.

up to
13,000 sq.ft

Up to 13,000 sq. ft. of prime city centre workspace within a brand new mixed-use development.

30 COMPANIES WORKING WITHIN TWS BUILDINGS	Space for companies to work and grow in.	Ample opportunity for networking	Work from other TWS locations
		220+ members	



Meeting Rooms

All TWS workspaces have bookable meeting rooms available from 9.00am to 5.00pm, Monday to Friday.



Event Hire

Multiple areas available for event hire - from networking events to workshops.



General Amenities

From printers to ping pong tables we include amenities to assist you switch on and off.

- Meeting Rooms
- MFD Printing
- Kitchen Facilities
- Phone Booths
- High Speed Internet
- Serviced Daily
- Onsite Showers
- Covid-19 Secure
- Guest Reception
- Package Handling
- On-site Staff







■ Cinema/Presentation Suite





Description:

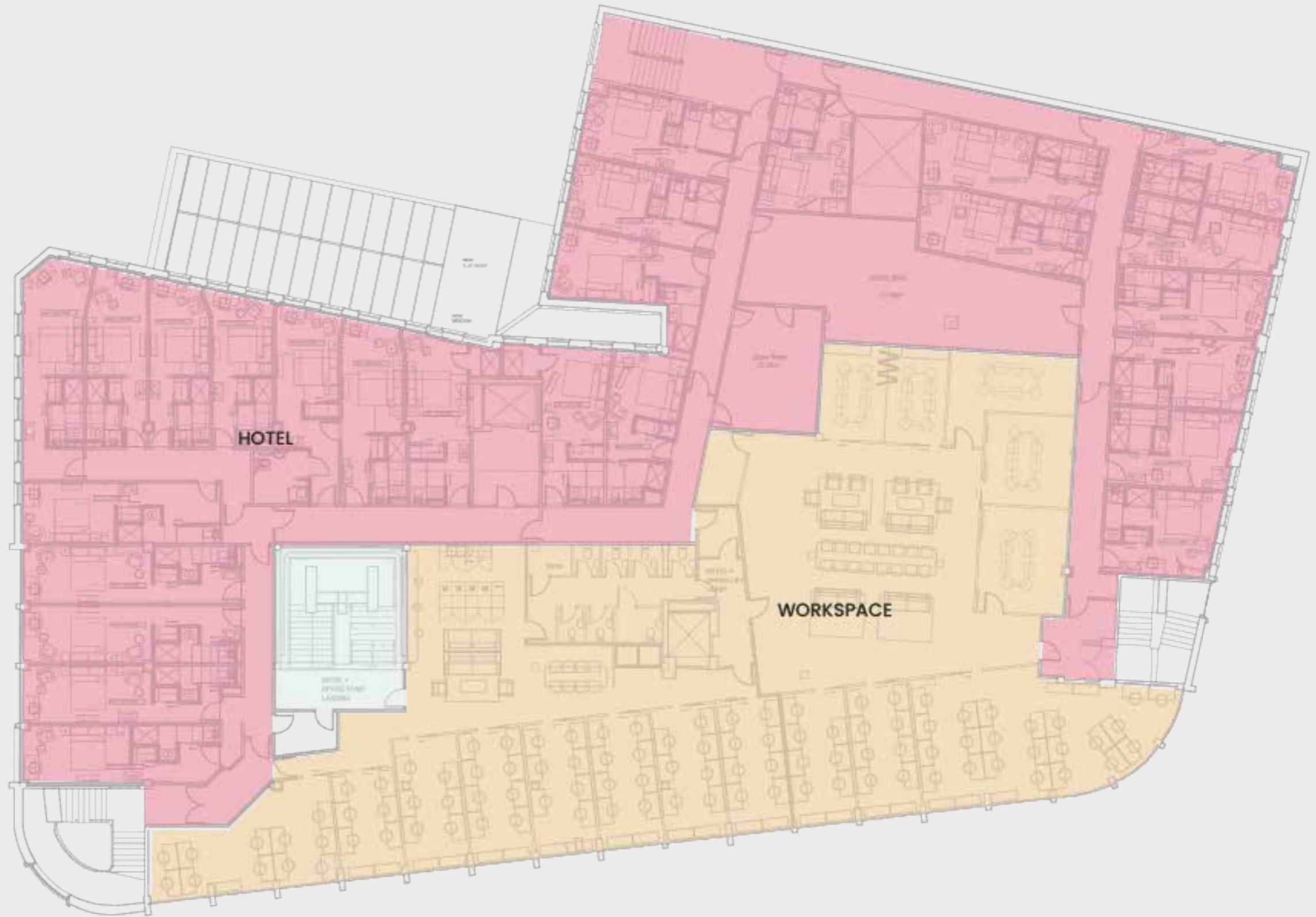
THIS Workspace will be arranged over two principal floors, providing office spaces around the perimeter whilst making the most of the wonderful natural light to the building, business lounges, meeting spaces and kitchens in the central area. The building will provide a gym, changing rooms, café, cinema, independent shops and foodhall.

Self-contained offices ranging in size from 150 sq. ft. (6-person office) up to 13,000 sq. ft. (220+ people across two floors) plus everything in between.



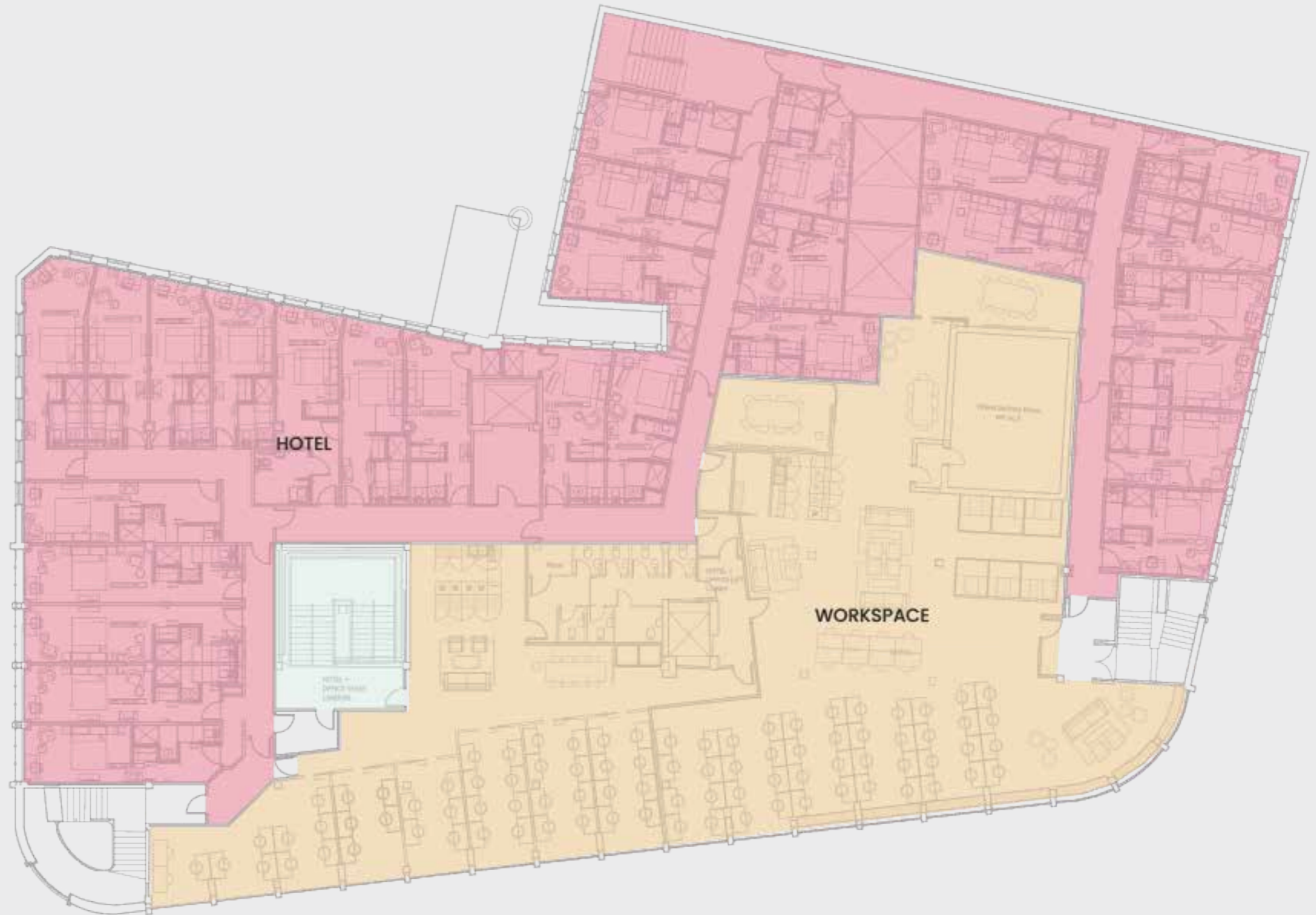
Project
Knight & Lee

Drawing title
First Floor



Project
Knight & Lee

Drawing title
Second Floor



The Building

Knight & Lee

History

Knight & Lee was a department store in Southsea, Hampshire, England.

Founded by William Winks as a lace business in 1865, it was Frederick Winks who innovated the business by moving the company to Palmerston Road and expanding its offering to become a department store.

The company was then bought by brothers-in-law Jesse Knight and Edward Herbert Soden Lee in 1888 who ran the business till 1922 before John Lewis bought the building in 1933.



“It was Frederick Winks who innovated the business by moving the company to Palmerston Road”

- 1874**
Frederick Wink moved his lace business to the more fashionable Palmerston Road in Southsea.
- 1887**
Knight and Lee purchase the business.
Brothers-in-law Jesse Knight and Edward Herbert Soden Lee purchased the business.
- 1908**
They purchased a former fishmongers on the corner of Stanley Lane and Palmerston Road. This was eventually joined by further purchases along Palmerston Road that joined the stores together.
- 1933**
The John Lewis partnership buys the business keeping the Knight & Lee name.
- 1944**
The building is destroyed by an incendiary bomb during WW2 and has to be rebuilt.
The building is destroyed in WW2.
- 2019**
John Lewis announces the closure of the Knight & Lee store in Southsea, after trading for more than 150 years.

Information

Rates

Included *

* Rates may be subject to increases.

Legal Costs

Each party to be responsible for their own legal costs incurred in any transaction.

Terms

On Application.

Viewings

We would be delighted to show you the scheme and discuss your specific business occupational needs.

Contact

Russell Mogridge
E: rmogridge@vailwilliams.com
023 8082 0900
07815 737 175

Matt Cureton
mcureton@vailwilliams.com
023 8082 0900
07786 735596

THIS workspace.



THIS workspace.

Bournemouth - Open

THIS workspace.

Bath - Coming Soon

THIS workspace.

Southampton - Coming Soon