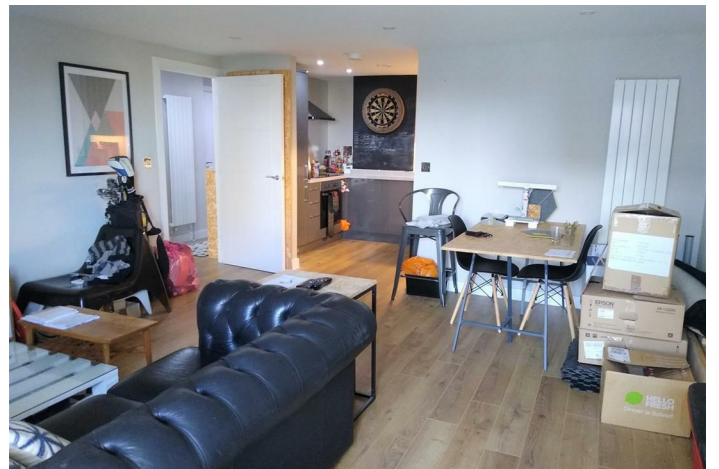


LEASEHOLD



Apartment (EPC Rating: C)

17A RICHMOND HOUSE, 61-71 VICTORIA AVENUE, SOUTHEND-ON-SEA, ESSEX, SS2

£180,000



First Step



C

1 Bedroom Apartment located in Southend-On-Sea

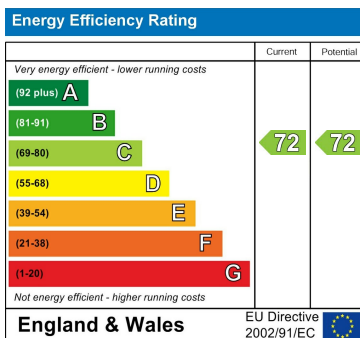
MUST BE SEEN.....AVAILABLE TO VIEW!!

One bedroom 3rd floor apartment in a landmark development, Richmond House. Situated in buzzing Southend-on-Sea. Centrally located for great transport links to London and surrounding area, and fitted to a high specification.

Council Tax Band

B

Energy Performance Graph



Call us on

01462 659 730

sales@firststep.ltd

www.firststep.ltd

Agents Note: Whilst every care has been taken to prepare these particulars, they are for guidance purposes only. All measurements are approximate and are for general guidance purposes only and whilst every care has been taken to ensure their accuracy, they should not be relied upon and potential buyers are advised to recheck the measurements.



First Step