

FREEHOLD



House - End Terrace (EPC Rating: C)

**4 ASTRAL CLOSE, LOWER STONDON,
BEDFORDSHIRE, SG16 6EL**

Price Guide

£190,000



First Step



1



1



1



C

1 Bedroom House - End Terrace located in Lower Stondon

CHAIN FREE... 1 allocated PARKING SPACE... Private GARDEN... Kitchen with APPLIANCES... Bay window... DOUBLE BEDROOM... Peaceful location...

INTERNAL

GROUND FLOOR

Entrance Hallway

Door from side aspect. Wall mounted consumer unit. Carpet. Door leading to:

Living Room

11'6" x 10'6"

Bay window to front aspect. Carpet. Staircase to first floor. Door leading to:

Kitchen

8'5" x 6'6"

Window to front aspect. A range of wall and base grey units with complementary work surface and tiled splash back area. Integrated single oven, 4 ring electric hob, extractor hood. Freestanding washing machine and under counter fridge/freezer. Single sink and drainer, wall mounted Worcester boiler, vinyl flooring. Door to understairs storage cupboard.

FIRST FLOOR

Landing

Carpet. Loft access. Doors leading to:

Bedroom 1

11'6" x 10'6"

Bay window to front aspect. Carpet. Single door to built in storage cupboard, fitted with shelf and rail.

Bathroom

Window to front aspect. White suite comprising: panelled P-shape fully tiled bath with wall mounted shower and curved glass screen, push button wc, wash hand basin with

2 door vanity unit and tiled splash back. Wall mounted cabinet, vinyl flooring.

EXTERNAL

Front Garden

Low level picket fence to perimeter, mainly laid to lawn, with gated access. Pathway to front door with external lockable storage cupboard and bin storage area.

Allocated Parking Space

Block paved allocated parking space for 1 car in front of garden.

ADDITIONAL PROPERTY INFORMATION

Freehold

EPC: Rating C

Council Tax: Band B

Traditional brick and block construction

1 allocated parking space

Economy 7 Water heating

Mains utilities

Local Area

Peacefully located with nearby towns of Henlow, Pirton, Ickleford & Hitchin, Lower Stondon is a village located in central Bedfordshire it is close to local shops, post office, hairdressers, 2 barbers and a pub which are all within walking distance. The Lodge nature reserve and the River Ivel both offer a peaceful day out for the family. Nearby attractions include the luxurious Champneys Health Spa, which is less than 3 miles away.

In the nearby village of Henlow there are a number of amenities including village store, a florist two pubs, local



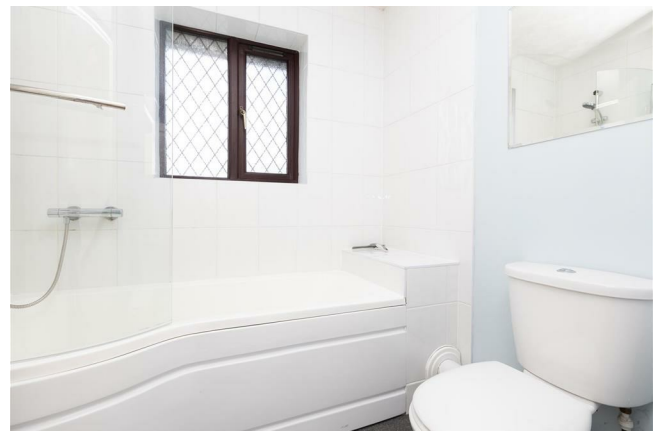
chemist and two local schools including Derwent School, Robert Bloomfield Shefford & Samuel Whitbread Academy.

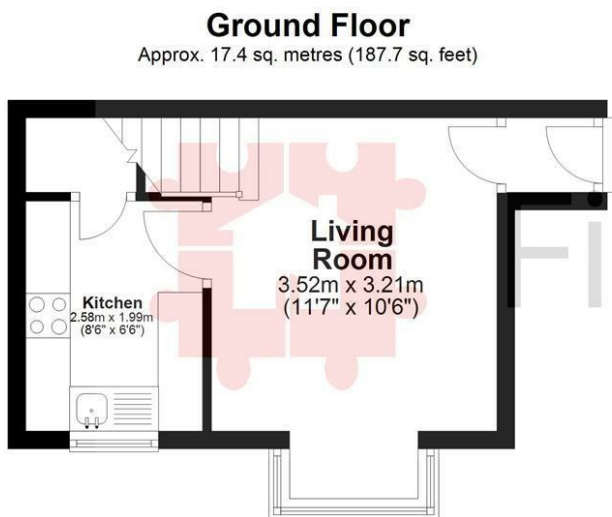
Centrally located to all major link roads to the A1 and M1 into London and Cambridge as well as Bedford and Milton Keynes. Fast train links into London Kings Cross & St Pancras via Arlesey are approximately 35-40mins.

Agents Note

The apparatus, equipment, fittings and services for this property have not been tested by First Step, all interested parties will need to satisfy themselves as to the condition of any such items or services. All measurements are approximate and therefore may be subject to a small margin of error.

These details are to be used as a guide only and their accuracy is therefore not guaranteed.



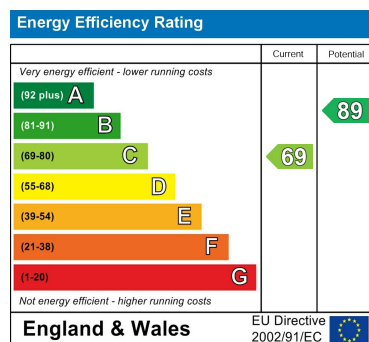


Total area: approx. 36.6 sq. metres (394.2 sq. feet)

Council Tax Band

B

Energy Performance Graph



Call us on

01462 659 730

sales@firststep.ltd

www.firststep.ltd

Agents Note: Whilst every care has been taken to prepare these particulars, they are for guidance purposes only. All measurements are approximate and are for general guidance purposes only and whilst every care has been taken to ensure their accuracy, they should not be relied upon and potential buyers are advised to recheck the measurements.



First Step