

LEASEHOLD



Apartment (EPC Rating: C)

**20 RICHMOND HOUSE, 61-71 VICTORIA AVENUE,
SOUTHEND-ON-SEA, ESSEX, SS2 6FP**

Shared Ownership

£60,000



First Step



2



1



1



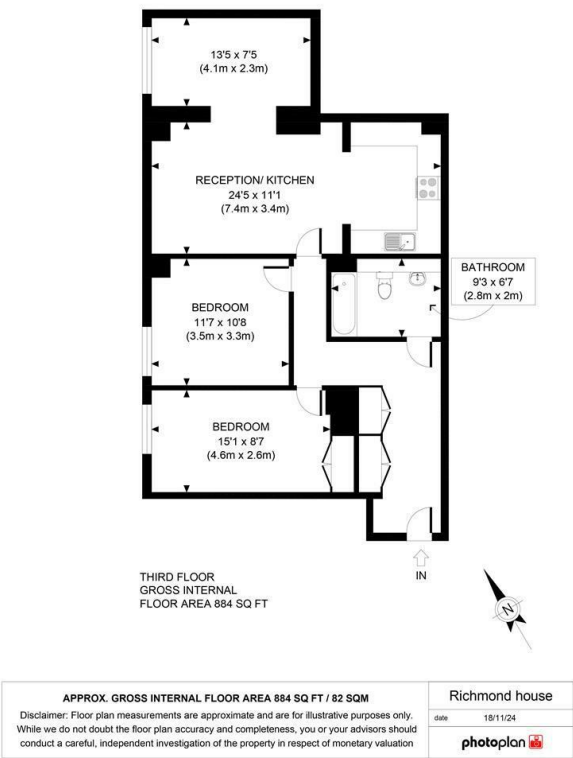
C

2 Bedroom Apartment located in Southend-On-Sea

****SHARED OWNERSHIP** NO ONWARD CHAIN**** Nestled in the heart of Southend, Richmond House offers a fantastic opportunity to own a stunning apartment in an ideal location. This modern property boasts a spacious reception room, two cosy bedrooms, and a sleek bathroom, perfect for comfortable living.

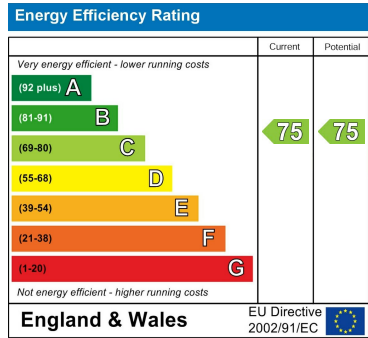
Built in 2016, this third-floor apartment exudes contemporary charm and style, with a generous 794 sq ft of living space to enjoy. The property is beautifully presented, offering a warm and inviting atmosphere for you to call home.

Convenience is key with an allocated parking space for one vehicle, ensuring you always have a secure spot waiting for you. The central location of Richmond House provides easy access to a plethora of amenities, including shops, restaurants, and excellent transport links. Only £60,000 for a 25% share.



Council Tax Band
D
Energy Performance Graph

Call us on
01462 659 730
sales@firststep.ltd
www.firststep.ltd



Agents Note: Whilst every care has been taken to prepare these particulars, they are for guidance purposes only. All measurements are approximate and are for general guidance purposes only and whilst every care has been taken to ensure their accuracy, they should not be relied upon and potential buyers are advised to recheck the measurements.