

FREEHOLD



House - Terraced (EPC Rating: D)

75 BURFORD WAY, HITCHIN, HERTS, SG5 2XP

Offers Over
£400,000

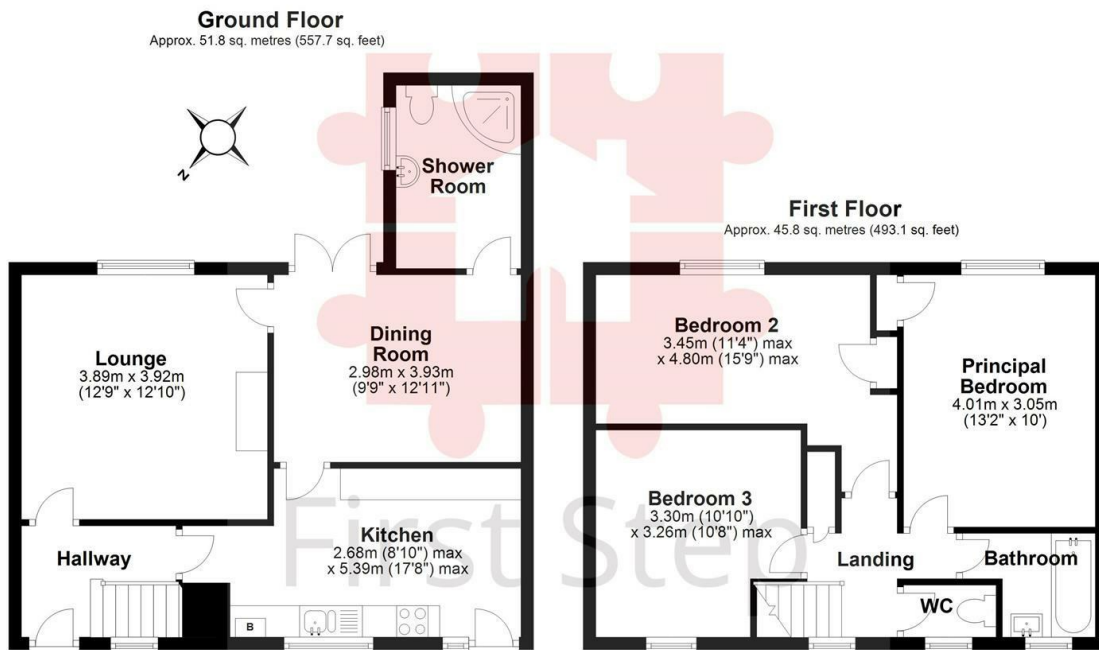


First Step



3 Bedroom House - Terraced located in Hitchin

CHAIN FREE... LARGE terraced home... 3 DOUBLE bedrooms... DRIVEWAY PARKING for 3 cars... SOUTHERLY GARDEN... Shower Room and Bathroom... LIVING ROOM plus DINING ROOM... BEAUTIFULLY PRESENTED...

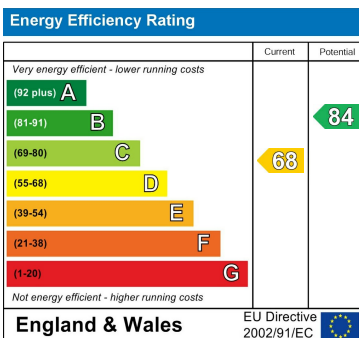


Total area: approx. 97.6 sq. metres (1050.8 sq. feet)

Council Tax Band

D

Energy Performance Graph



Call us on

01462 659 730

sales@firststep.ltd

www.firststep.ltd

Agents Note: Whilst every care has been taken to prepare these particulars, they are for guidance purposes only. All measurements are approximate and are for general guidance purposes only and whilst every care has been taken to ensure their accuracy, they should not be relied upon and potential buyers are advised to recheck the measurements.



First Step