



House - Mid Terrace

**20 TANSY AVENUE,
STOTFOLD, HITCHIN,
HERTS, SG5 4GJ**

Per Calendar Month

£1,750 Per

FEATURES

- 4 BEDROOM FAMILY HOME
- EN-SUITE TO MASTER
- FAMILY BATHROOM
- OPEN PLAN KITCHEN/DINER/LOUNGE
- CLOAKROOM
- GARDEN WITH DECKING
- GARAGE WITH PARKING
- AVAILABLE LATE AUGUST 2024
- EPC RATING - C
- COUNCIL TAX BAND - D



First Step

4 Bedroom House - Mid Terrace located in Stotfold, Hitchin

4 BEDROOMS...EN-SUITE TO MASTER...POPULAR GREENACRES DEVELOPMENT...FAMILY HOME... GARAGE WITH PARKING...AVAILABLE LATE AUGUST 2024...

Call us on

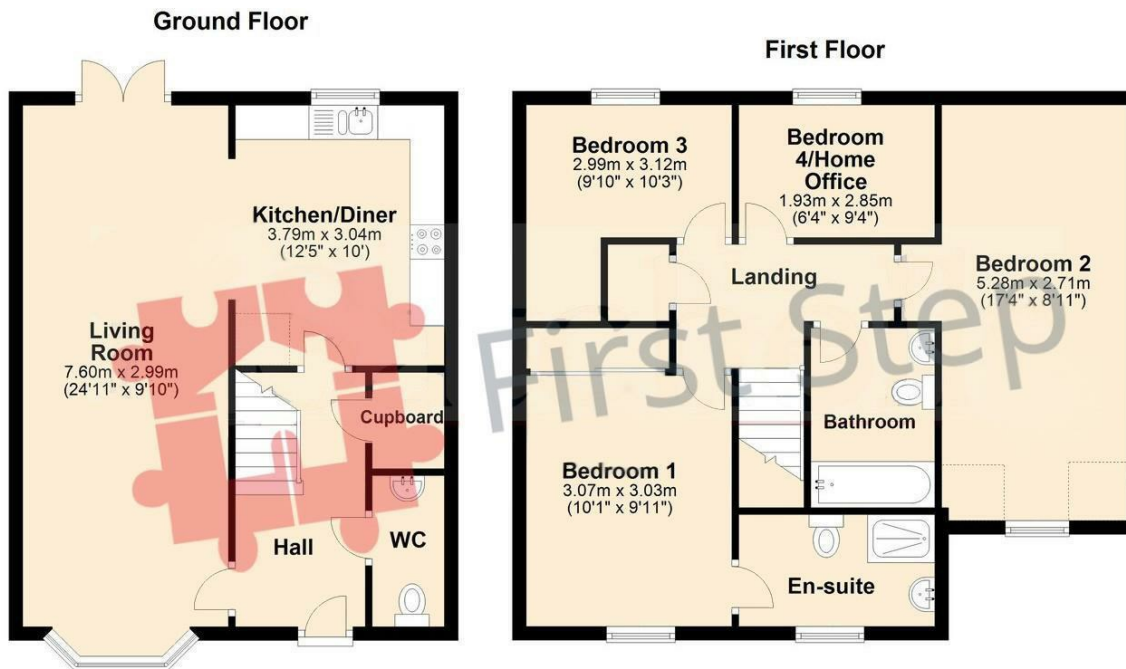
01462 659 730

rentals@firststep.ltd

www.firststep.ltd

Council Tax Band

D



For illustrative purposes only - NOT TO SCALE - Measurements shown are approximate. The size and position of doors, windows, appliances and other features are approximate. Plan produced using PlanUp.

Energy Efficiency Rating		Current	Potential
Very energy efficient - lower running costs			
(92 plus)	A		88
(81-91)	B	77	
(69-80)	C		
(55-68)	D		
(39-54)	E		
(21-38)	F		
(1-20)	G		
Not energy efficient - higher running costs			
England & Wales		EU Directive 2002/91/EC	

Agents Note: Whilst every care has been taken to prepare these particulars, they are for guidance purposes only. All measurements are approximate and are for general guidance purposes only and whilst every care has been taken to ensure their accuracy, they should not be relied upon and potential buyers are advised to recheck the measurements.