

LEASEHOLD



Apartment - First Floor (EPC Rating: B)

FLAT 5, FENTON COURT BURGESS SPRINGS, CHELMSFORD, CM1 1HW

Shared Ownership

£78,750

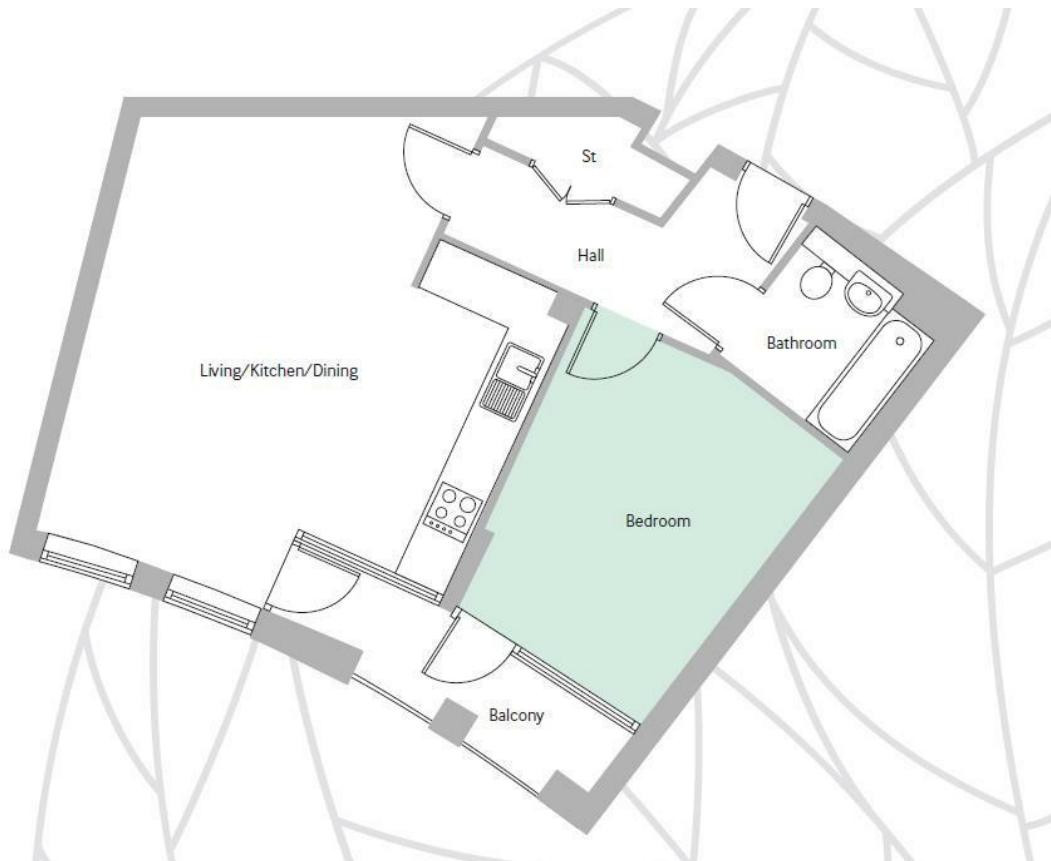


First Step



1 Bedroom Apartment - First Floor located in Chelmsford

****SHARED OWNERSHIP**** SPACIOUS and MODERN 1 bedroom first floor apartment. Fitted to a HIGH SPECIFICATION. ALLOCATED parking space. Private BALCONY. Opposite Chelmsford TRAIN STATION. 35% share ONLY £78,750.



Council Tax Band

C

Energy Performance Graph

| Energy Efficiency Rating | | Current | Potential |
|---|-------------------------|---------|-----------|
| Very energy efficient - lower running costs | | | |
| (92 plus) A | | | |
| (81-91) B | | 82 | 82 |
| (69-80) C | | | |
| (55-68) D | | | |
| (39-54) E | | | |
| (21-38) F | | | |
| (1-20) G | | | |
| Not energy efficient - higher running costs | | | |
| England & Wales | EU Directive 2002/91/EC | | |

Call us on

01462 659 730

sales@firststep.ltd

www.firststep.ltd

Agents Note: Whilst every care has been taken to prepare these particulars, they are for guidance purposes only. All measurements are approximate and are for general guidance purposes only and whilst every care has been taken to ensure their accuracy, they should not be relied upon and potential buyers are advised to recheck the measurements.



First Step