

FREEHOLD



House - Detached (EPC Rating: B)

6 HAWTHORN CROFT, STOTFOLD, HERTS, SG5 4RT

Offers Over
£550,000

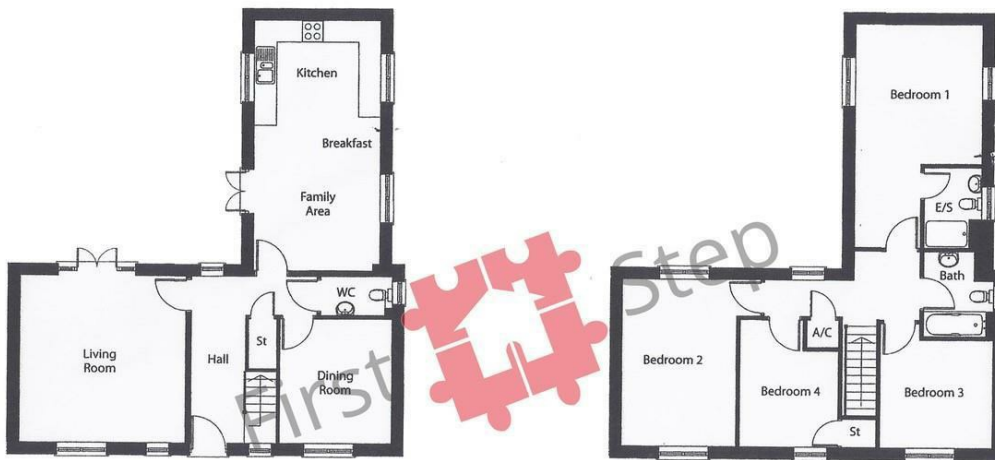


First Step



4 Bedroom House - Detached located in Stotfold

STUNNING home with NO COMPROMISES!! Spacious kitchen/breakfast family room... HOME OFFICE... PLAY ROOM... DRESSING AREA & en-suite... 4 DOUBLE Bedrooms... SOUTH facing garden... DRIVEWAY for 2 cars...



Ground Floor

Living Room	4565mm x 4496mm	15'0" x 14'9"
Kitchen/Breakfast Area	3440mm x 2630mm	11'3" x 8'8"
Family Area	4195mm x 3440mm	13'9" x 11'3"
Dining Room	3414mm x 3050mm	11'2" x 10'0"

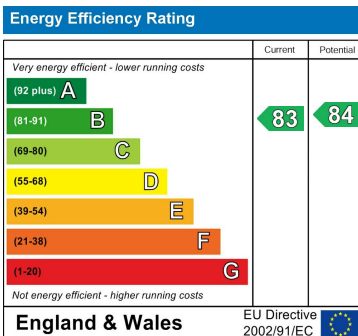
First Floor

Bedroom 1	6073mm x 3440mm	19'11" x 11'3"
Bedroom 2	4565mm x 3085mm	15'0" x 10'11"
Bedroom 3	3050mm x 2942mm	10'0" x 9'8"
Bedroom 4	3484mm x 2694mm	11'5" x 8'10"

Council Tax Band

F

Energy Performance Graph



Call us on

01462 659 730

sales@firststep.ltd

www.firststep.ltd

Agents Note: Whilst every care has been taken to prepare these particulars, they are for guidance purposes only. All measurements are approximate and are for general guidance purposes only and whilst every care has been taken to ensure their accuracy, they should not be relied upon and potential buyers are advised to recheck the measurements.



First Step