

FREEHOLD



House - Semi-Detached (EPC Rating: C)

8 BRUNEL WALK, FAIRFIELD, HITCHIN, HERTS, SG5 4GE

Offers Over
£500,000

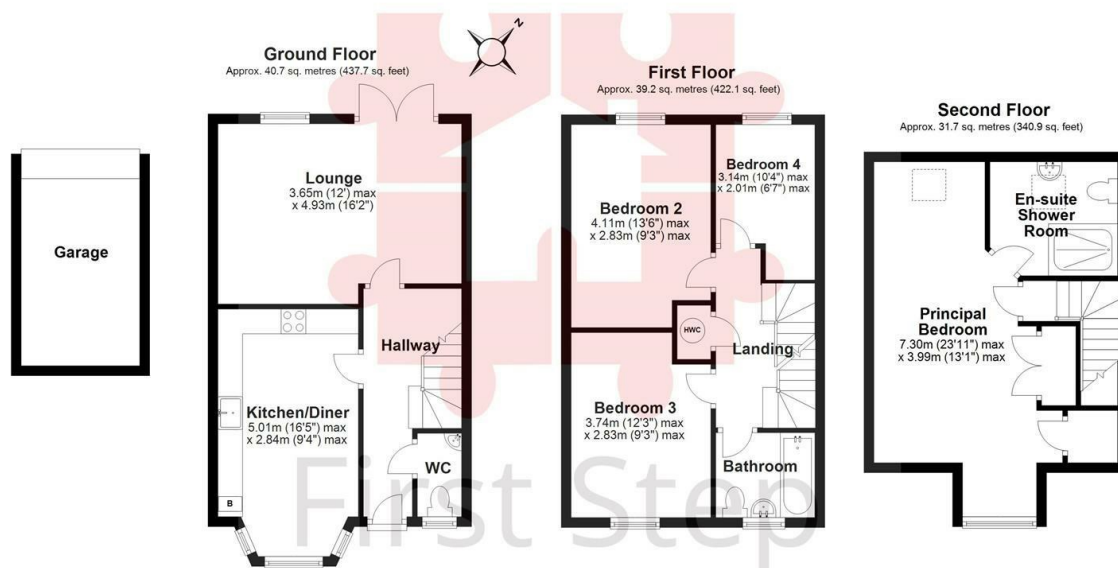


First Step



4 Bedroom House - Semi-Detached located in Fairfield, Hitchin

COMPLETED UPWARD CHAIN... VIDEO attached... * INCENTIVE OF 2 YEARS FREE SERVICE CHARGE WORTH OVER A £1000... NEW KITCHEN... Located on a QUIET WALKWAY... WEST Facing Garden... GARAGE & Parking... LOUNGE with FRENCH DOORS to Garden... PRINCIPAL with EN-SUITE... BEAUTIFULLY Presented SEMI Detached HOME...

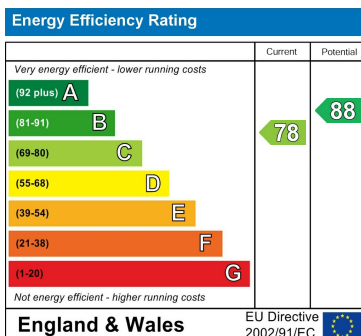


Total area: approx. 111.6 sq. metres (1200.7 sq. feet)

Council Tax Band

D

Energy Performance Graph



Call us on

01462 659 730

sales@firststep.ltd

www.firststep.ltd

Agents Note: Whilst every care has been taken to prepare these particulars, they are for guidance purposes only. All measurements are approximate and are for general guidance purposes only and whilst every care has been taken to ensure their accuracy, they should not be relied upon and potential buyers are advised to recheck the measurements.



First Step