

FREEHOLD



House - Detached (EPC Rating: B)

**25 HAWTHORN CROFT, STOTFOLD, HITCHIN, HERTS,  
SG5 4RT**

**Price Guide**

**£550,000**

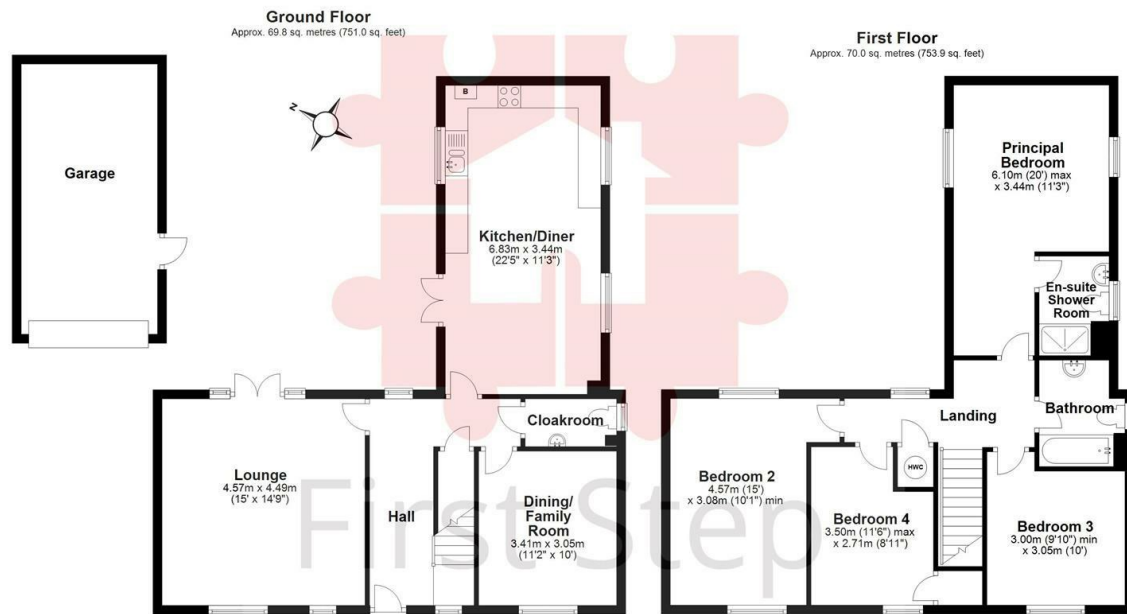


First Step



# 4 Bedroom House - Detached located in Hitchin

SPACIOUS DETACHED FAMILY HOME... ENTERTAINING Kitchen/Diner... SEPARATE Dining/Family Room... Lounge with FRENCH DOORS to garden... EN-SUITE... 4 DOUBLE Bedrooms... GARAGE Plus DRIVEWAY Parking...

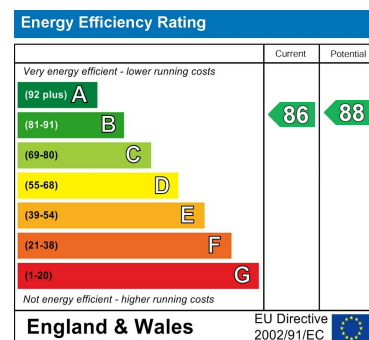


Total area: approx. 139.8 sq. metres (1504.9 sq. feet)

Council Tax Band

F

Energy Performance Graph



Call us on

01462 659 730

sales@firststep.ltd

www.firststep.ltd

Agents Note: Whilst every care has been taken to prepare these particulars, they are for guidance purposes only. All measurements are approximate and are for general guidance purposes only and whilst every care has been taken to ensure their accuracy, they should not be relied upon and potential buyers are advised to recheck the measurements.



First Step