

FREEHOLD



House - Detached (EPC Rating: C)

**16 SALISBURY CLOSE, FAIRFIELD, HITCHIN, HERTS,
SG5 4FL**

Offers Over

£548,000

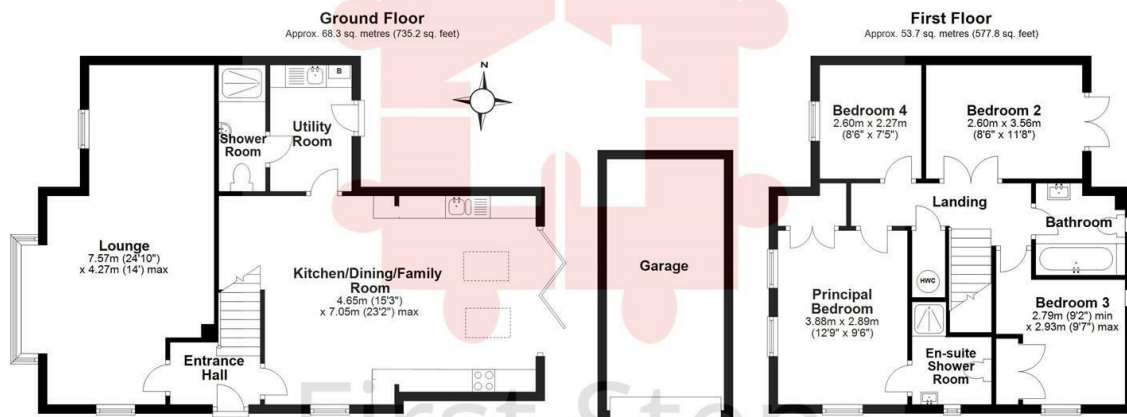


First Step



4 Bedroom House - Detached located in Fairfield, Hitchin

UPGRADED ENTERTAINING Kitchen/Dining/Family Room... WOODEN SHUTTERS... UTILITY Room... LARGE DUAL ASPECT Lounge... DOWNSTAIRS Shower Room... Principal EN-SUITE... PRIVATE WALLED GARDEN... GARAGE... IMMACULATE CONDITION...

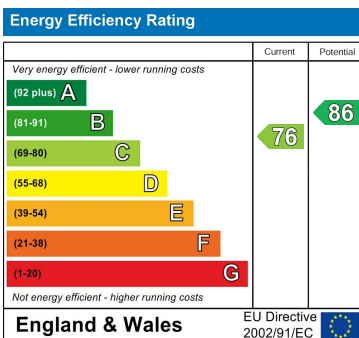


Total area: approx. 122.0 sq. metres (1313.0 sq. feet)

Council Tax Band

E

Energy Performance Graph



Call us on

01462 659 730

sales@firststep.ltd

www.firststep.ltd

Agents Note: Whilst every care has been taken to prepare these particulars, they are for guidance purposes only. All measurements are approximate and are for general guidance purposes only and whilst every care has been taken to ensure their accuracy, they should not be relied upon and potential buyers are advised to recheck the measurements.



First Step