

FREEHOLD



House - Semi-Detached (EPC Rating: C)

**153 BRONTE AVENUE, FAIRFIELD HITCHIN, HERTS,
SG5 4FT**

**Offers In Excess Of
£465,000**

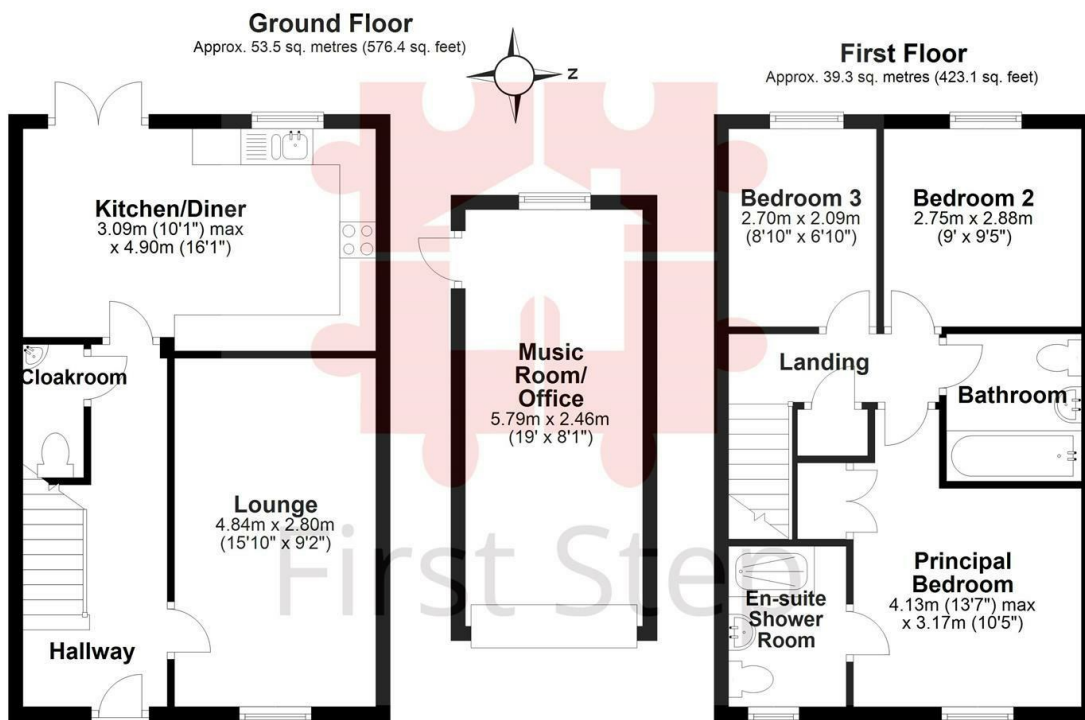


First Step



3 Bedroom House - Semi-Detached located in Fairfield Hitchin

NEWLY UPGRADED KITCHEN... WEST facing garden... FULLY CONVERTED GARAGE... UPGRADED EN-SUITE & CLOAKROOM... Driveway Parking... sought after TREE LINED Avenue... Immaculately presented...

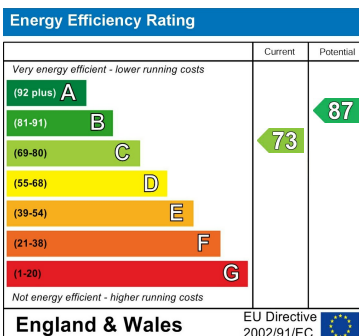


Total area: approx. 92.9 sq. metres (999.4 sq. feet)

Council Tax Band

D

Energy Performance Graph



Call us on

01462 659 730

sales@firststep.ltd

www.firststep.ltd

Agents Note: Whilst every care has been taken to prepare these particulars, they are for guidance purposes only. All measurements are approximate and are for general guidance purposes only and whilst every care has been taken to ensure their accuracy, they should not be relied upon and potential buyers are advised to recheck the measurements.



First Step